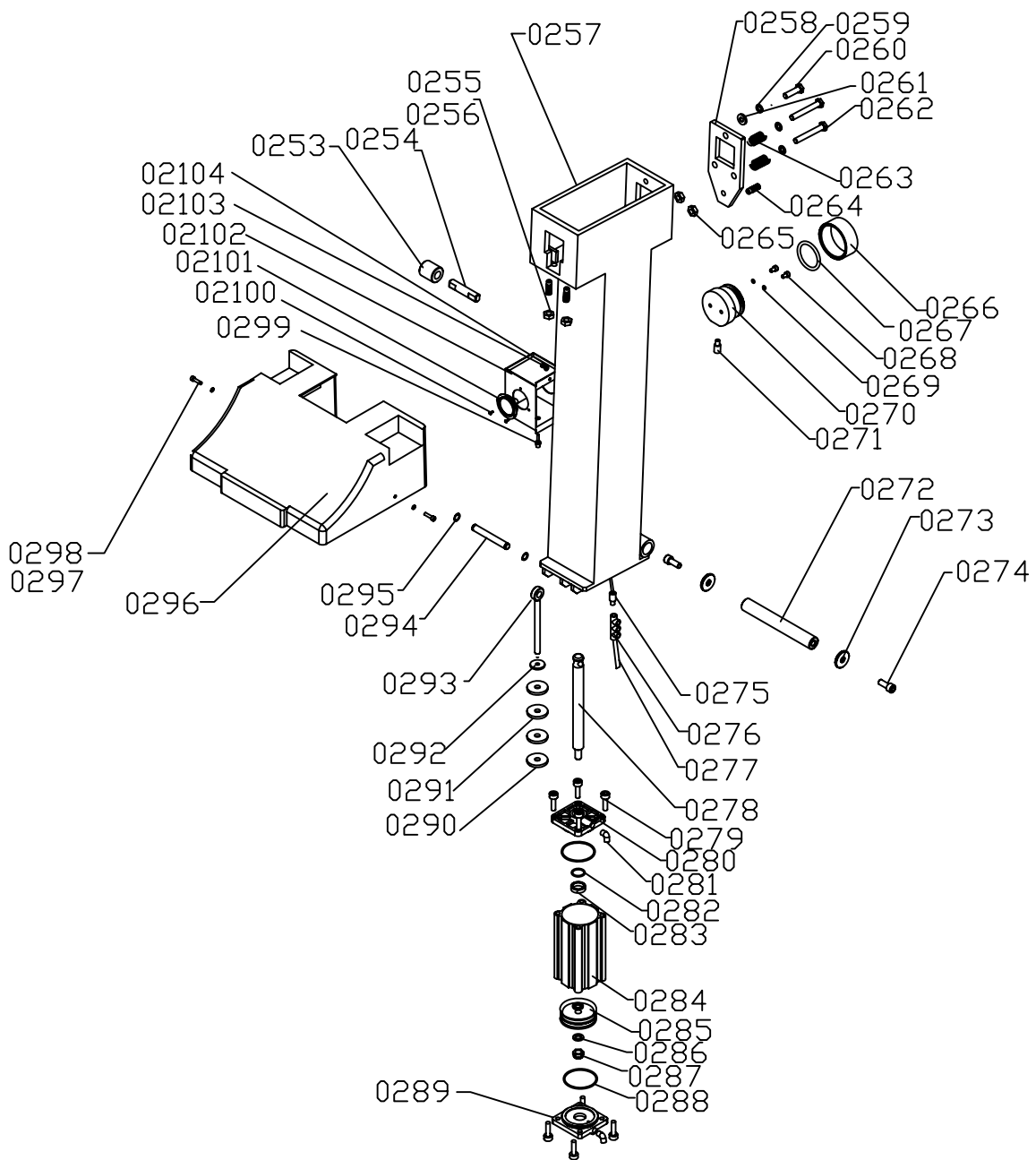
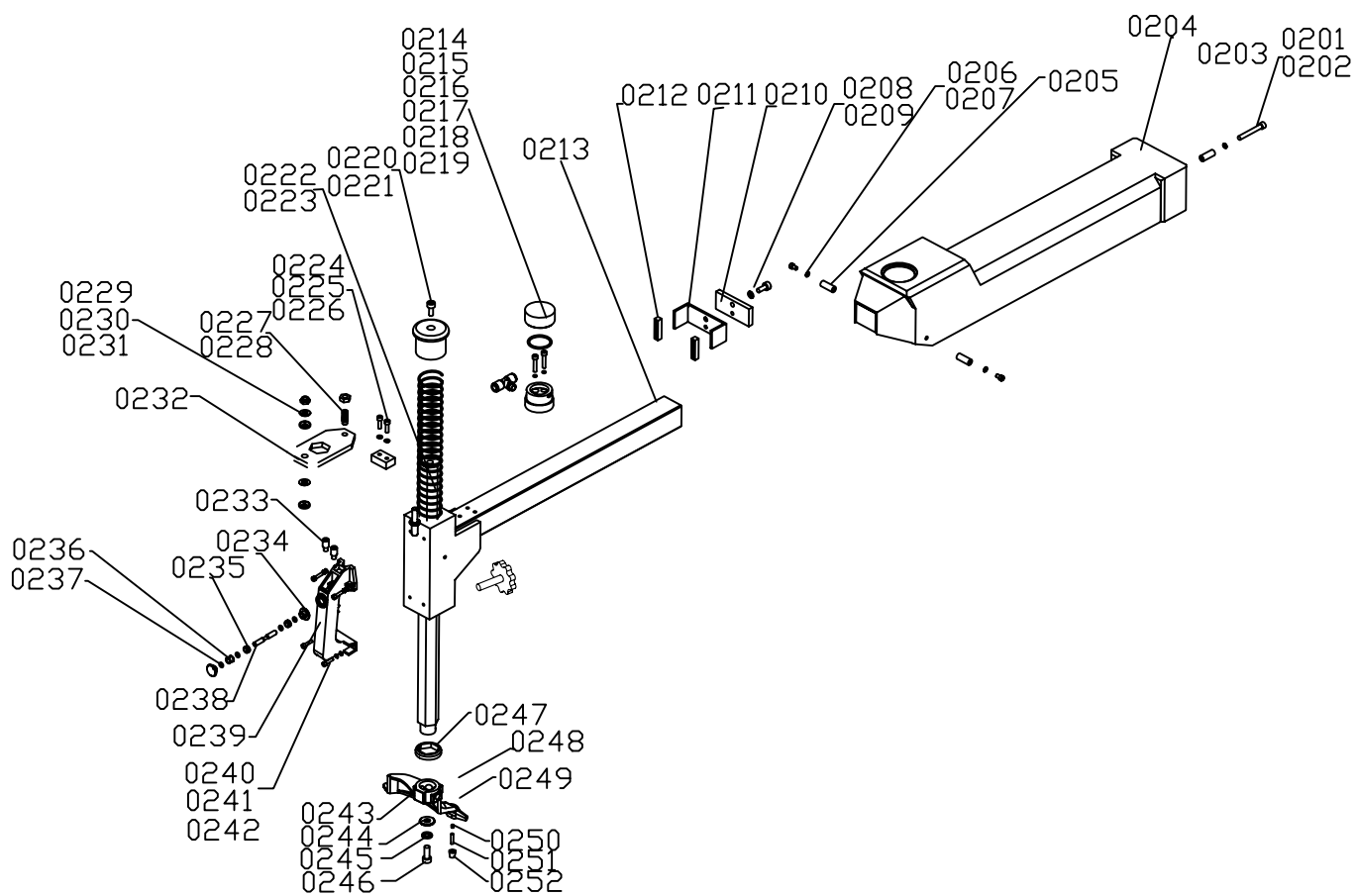


| Sl. No. | Description | QTY |
|---------|--|-----|
| 0101 | Inner hexagonal bolt M6x15 | 4 |
| 0102 | Shroud board for machine body | 1 |
| 0103 | Cabinet | 1 |
| 0104 | Protecting hood for actuating arm base bracket | 2 |
| 0105 | Inner hexagonal bolt M6x10 | 2 |
| 0106 | Spring washer $\Phi 6$ | 2 |
| 0107 | Flat washer $\Phi 6$ | 2 |
| 0108 | Air reserved tank bracket | 1 |
| 0109 | Air reserved tank | 1 |
| 0110 | Security valve | 1 |
| 0111 | Inner hexagonal bolt M10x25 | 2 |
| 0112 | Spring washer $\Phi 10$ | 2 |
| 0113 | Flat washer $\Phi 10$ | 2 |
| 0114 | Wire lock | 1 |
| 0115 | Air reserved tank connector | 1 |
| 0116 | Inner hexagonal bolt M4x55 | 2 |
| 0117 | Direct connector | 2 |
| 0118 | Oil segregator | 1 |
| 0119 | Power wire | 1 |
| 0120 | Bead lube holder | 1 |
| 0121 | Bead break blade protection board | 2 |
| 0122 | Inner hexagonal bolt M6x35 | 6 |
| 0123 | Tool crib | 1 |
| 0124 | crow | 1 |
| 0125 | Nut M6 | 3 |
| 0126 | Shroud board for pedal | 1 |
| 0127 | Flat washer $\Phi 6$ | 3 |
| 0128 | Spring washer $\Phi 6$ | 3 |
| 0129 | Inner hexagonal bolt M6x25 | 3 |
| | | |
| | | |
| | | |
| | | |



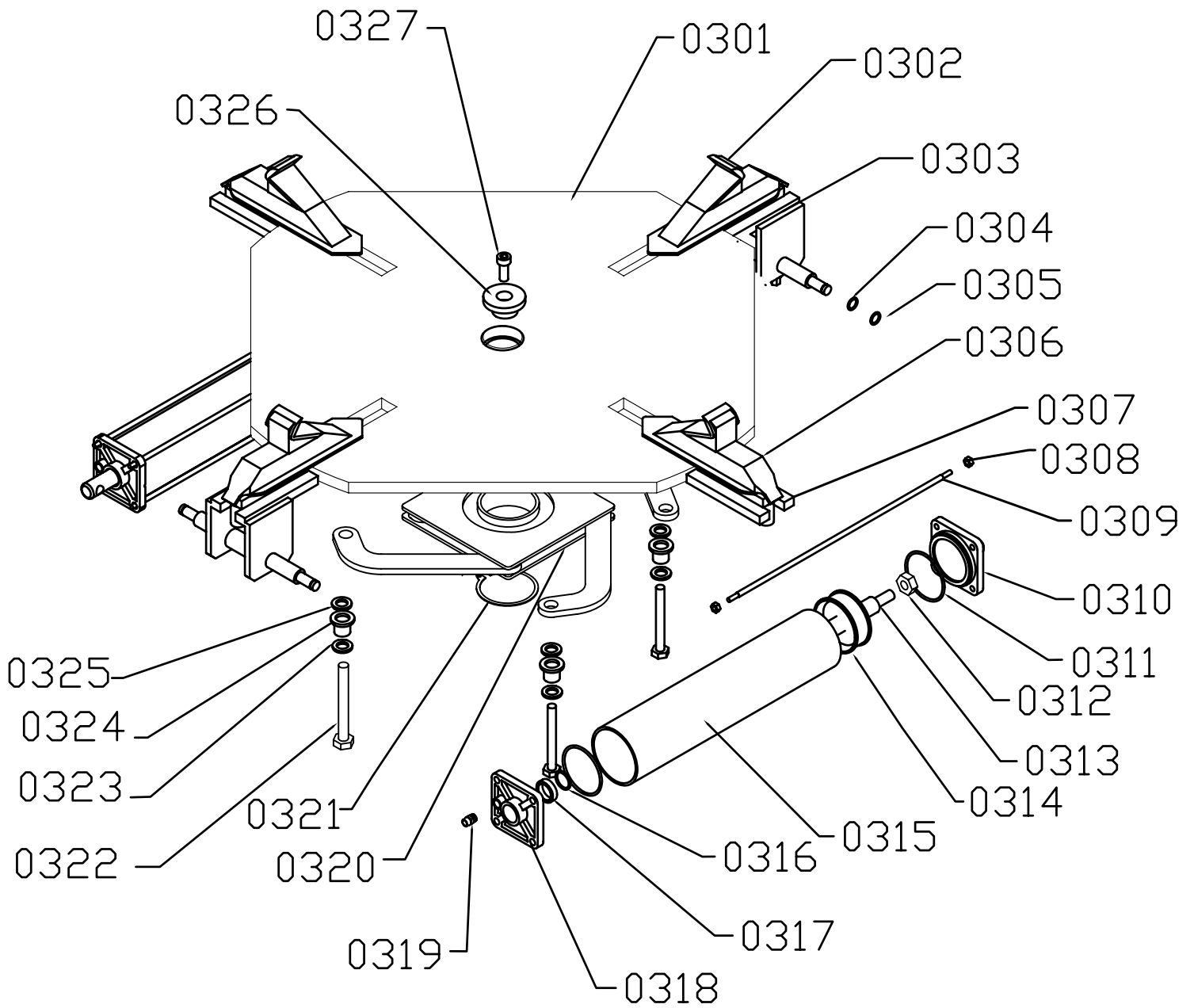


push-pull arm

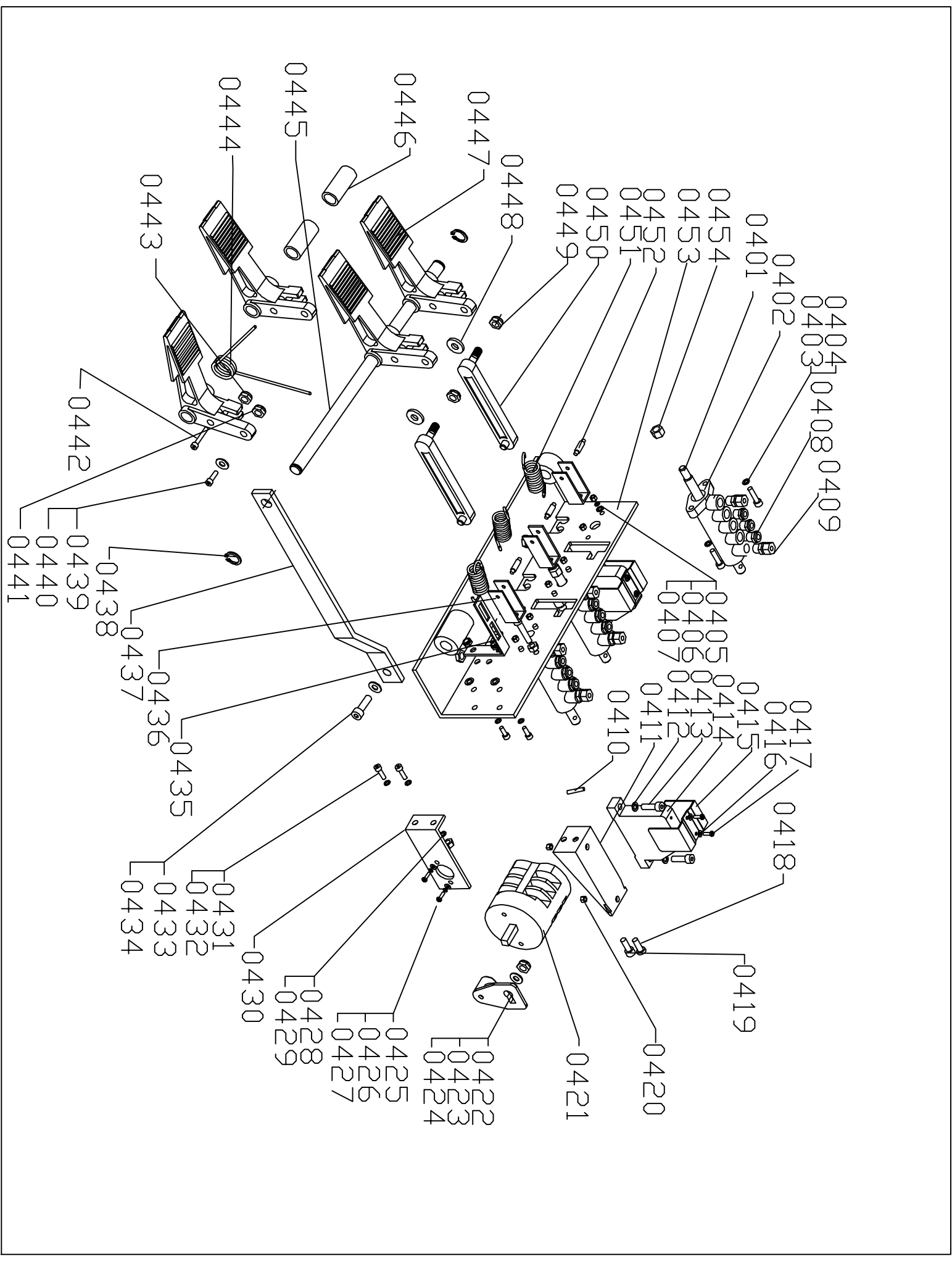
| NO. | NAME | QTY |
|------|--|-----|
| 0201 | Inner hexagonal bolt M6×50 | 1 |
| 0202 | Flat washer Φ6 | 1 |
| 0203 | Adapter sleeve | 1 |
| 0204 | Push-pull arm protecting hood | 1 |
| 0205 | Adapter sleeve | 2 |
| 0206 | Inner hexagonal bolt M6×50 | 2 |
| 0207 | Flat washer Φ6 | 2 |
| 0208 | Inner hexagonal bolt M8×40 | 1 |
| 0209 | Flat washer Φ6 | 1 |
| 0210 | Rear stop stiffening panel | 1 |
| 0211 | Rear stop panel | 1 |
| 0212 | Rear-stop shock absorber washer | 1 |
| 0213 | Push-pull arm | 1 |
| 0214 | Hexagonal lever lock cylinder head | 1 |
| 0215 | O ring 9X1.8 | 1 |
| 0216 | Inner hexagonal bolt M6×30 | 2 |
| 0217 | Flat washer Φ6 | 2 |
| 0218 | downside cover of Hexagonal levr lock cylinder | 1 |
| 0219 | T connector | 1 |
| 0220 | Inner hexagonal bolt M8×25 | 1 |
| 0221 | Pressure spring cap | 1 |
| 0222 | Press spring for hexagonal shaft | 1 |
| 0223 | Hexagonal shaft | 1 |
| 0224 | Inner hexagonal bolt M6×20 | 2 |
| 0225 | Flat washer Φ6 | 2 |
| 0226 | Glue stop | 1 |
| 0227 | Inner hexagonal bolt M10×25 | 1 |
| 0228 | Thin hexagonal nut M10 | 1 |
| 0229 | Pressure spring M10 | 1 |
| 0230 | Spherical washer 10 | 2 |
| 0231 | Butterfly washer 10 | 2 |
| 0232 | Lock plate for hexagonal shaft | 1 |
| 0233 | Direct connector | 2 |
| 0234 | Air valve hood | 2 |
| 0235 | Space | 2 |
| 0236 | O ring | 2 |
| 0237 | Snap ring for holes | 2 |

| | | |
|------|------------------------------|---|
| 0238 | Valve staff | 1 |
| 0239 | Push-pull arm handle | 1 |
| 0240 | Inner hexagonal bolt M5×20 | 4 |
| 0241 | Spring washer 5 | 4 |
| 0242 | flat washer 5 | 4 |
| 0243 | M/D head | 1 |
| 0244 | Big washer | 1 |
| 0245 | Spring washer 12 | 1 |
| 0246 | Inner hexagonal bolt M12×25 | 1 |
| 0247 | Shocking pad | 1 |
| 0248 | Inner hexagonal screw M12×25 | 2 |
| 0249 | Inner hexagonal screw M10×25 | 1 |
| 0250 | Inner hexagonal screw M6×4 | 1 |
| 0251 | Roller retainer pin 5X22 | 1 |
| 0252 | M/D head Roller | 1 |
| 0253 | Roller | 1 |
| 0254 | Roller shaft | 1 |
| 0255 | Inner hexagonal bolt M10×25 | 2 |
| 0256 | Nut M10 | 2 |
| 0257 | Actuating arm | 1 |
| 0258 | Quard-shaft lock panel | 1 |
| 0259 | Spring washer 10 | 1 |
| 0260 | Inner hexagonal bolt M10×50 | 1 |
| 0261 | Flat washer 10 | 3 |
| 0262 | Inner hexagonal bolt M10×70 | 2 |
| 0263 | spring | 2 |
| 0264 | Inner hexagonal bolt M10×35 | 1 |
| 0265 | Nut 10 | 2 |
| 0266 | Upper lock cylinder cover | 1 |
| 0267 | O ring 9X1.8 | 1 |
| 0268 | Inner hexagonal bolt M6×30 | 2 |
| 0269 | flat washer 6 | 2 |
| 0270 | Downside lock cylinder cover | 1 |
| 0271 | connector | 1 |

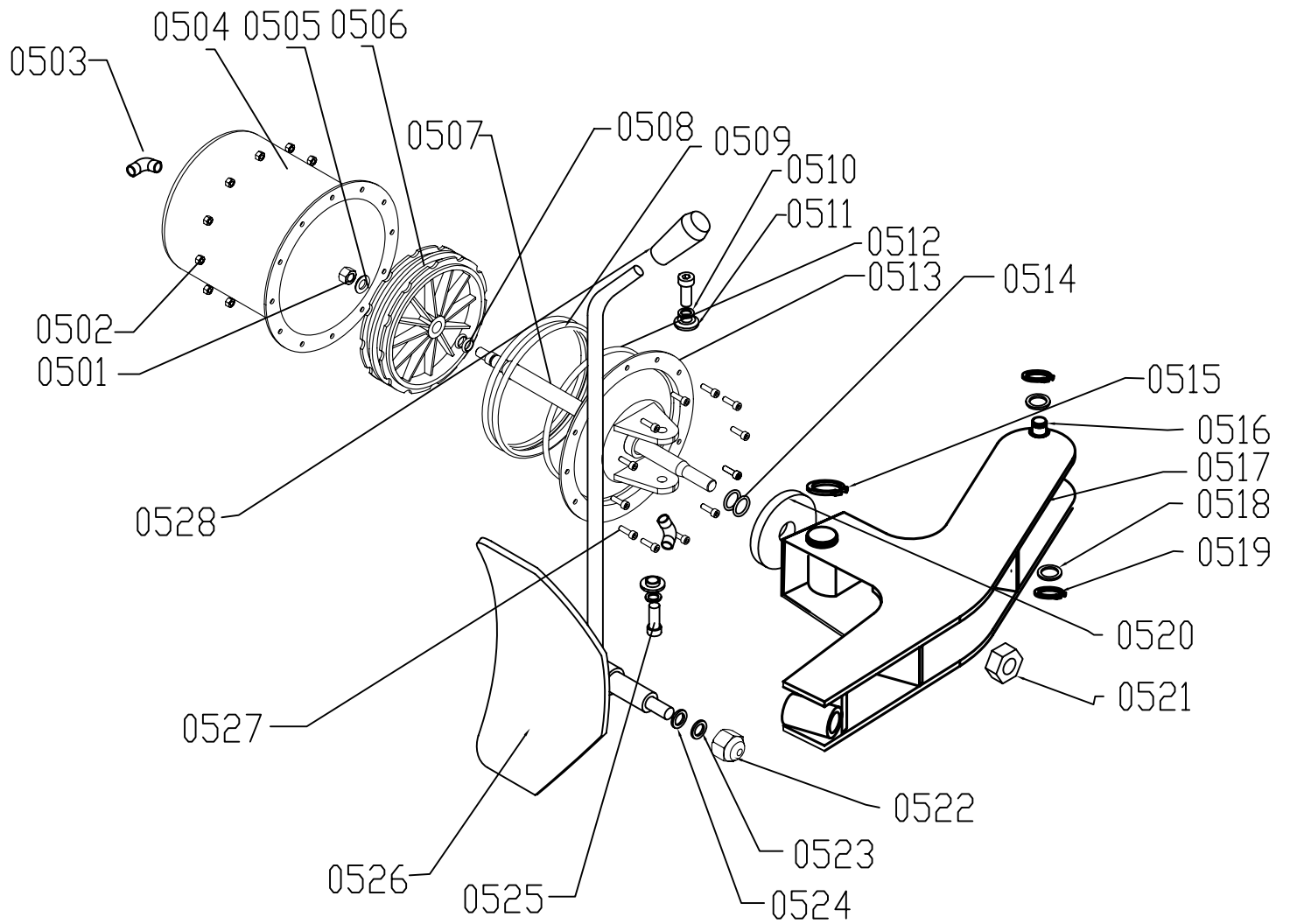
| | | |
|-------|--|---|
| 0272 | axle | 1 |
| 0273 | Flat washer 10 | 2 |
| 0274 | Inner hexagonal bolt M10×20 | 2 |
| 0275 | connector | 1 |
| 0276 | Valve | 1 |
| 0277 | air release pipe | 1 |
| 0278 | piston rod | 1 |
| 0279 | Inner hexagonal bolt M8×25 | 8 |
| 0280 | Small cylinder upper cover | 1 |
| 0281 | Direct connector | 2 |
| 0282 | O ring 24X2.4 | 2 |
| 0283 | Y ring 28X20X5 | 1 |
| 0284 | Small cylinder | 1 |
| 0285 | piston | 1 |
| 0286 | flat washer 12 | 1 |
| 0287 | self lock nut 12 | 1 |
| 0288 | O ring 60X2.65 | 1 |
| 0289 | Small cylinder nether cover | 1 |
| 0290 | Self locking nut 10 | 1 |
| 0291 | Flat washer 27 | 1 |
| 0292 | washer | 1 |
| 0293 | Positioning screw | 1 |
| 0294 | Quill for actuating arm | 1 |
| 0295 | Snap ring for shaft | 1 |
| 0296 | Protecting hood for actuating arm base | 1 |
| 0297 | Flat washer 6 | 2 |
| 0298 | Inner hexagonal bolt M6×16 | 2 |
| 0299 | air charging connector | 1 |
| 02100 | cross bolt | 3 |
| 02101 | air presssure gauge | 1 |
| 02102 | gauge box | 1 |
| 02103 | Inner hexagonal bolt | 2 |
| 02104 | washer | 1 |



| NO. | NAME | QTY |
|------|-----------------------------|-----|
| 0301 | Turn table | 1 |
| 0302 | Clamp | 4 |
| 0303 | Suspension frame | 2 |
| 0304 | Flat washer 12 | 8 |
| 0305 | Snap ring for shaft 12 | 8 |
| 0306 | Sliding block | 4 |
| 0307 | Sliding board on turn table | 4 |
| 0308 | Self stop nut M6 | 16 |
| 0309 | Bolt rod | 8 |
| 0310 | Small cylinder back cover | 2 |
| 0311 | O ring 60x2.65 | 4 |
| 0312 | Self stop nut M12 | 2 |
| 0313 | Piston shaft | 2 |
| 0314 | Piston | 2 |
| 0315 | Container | 2 |
| 0316 | O ring 24x2.4 | 2 |
| 0317 | Y ring 28x20x5 | 2 |
| 0318 | Small cylinder front cover | 2 |
| 0319 | Connector | 4 |
| 0320 | Secondary turn table | 1 |
| 0321 | Snap ring for shaft 65 | 1 |
| 0322 | Inner hexagonal bolt M12x90 | 4 |
| 0323 | Flat washer 12 | 4 |
| 0324 | Director sleeve | 4 |
| 0325 | Flat washer | 4 |
| 0326 | Press washer | 1 |
| 0327 | Inner hexagonal bolt M12x30 | 1 |
| | | |
| | | |
| | | |
| | | |
| | | |

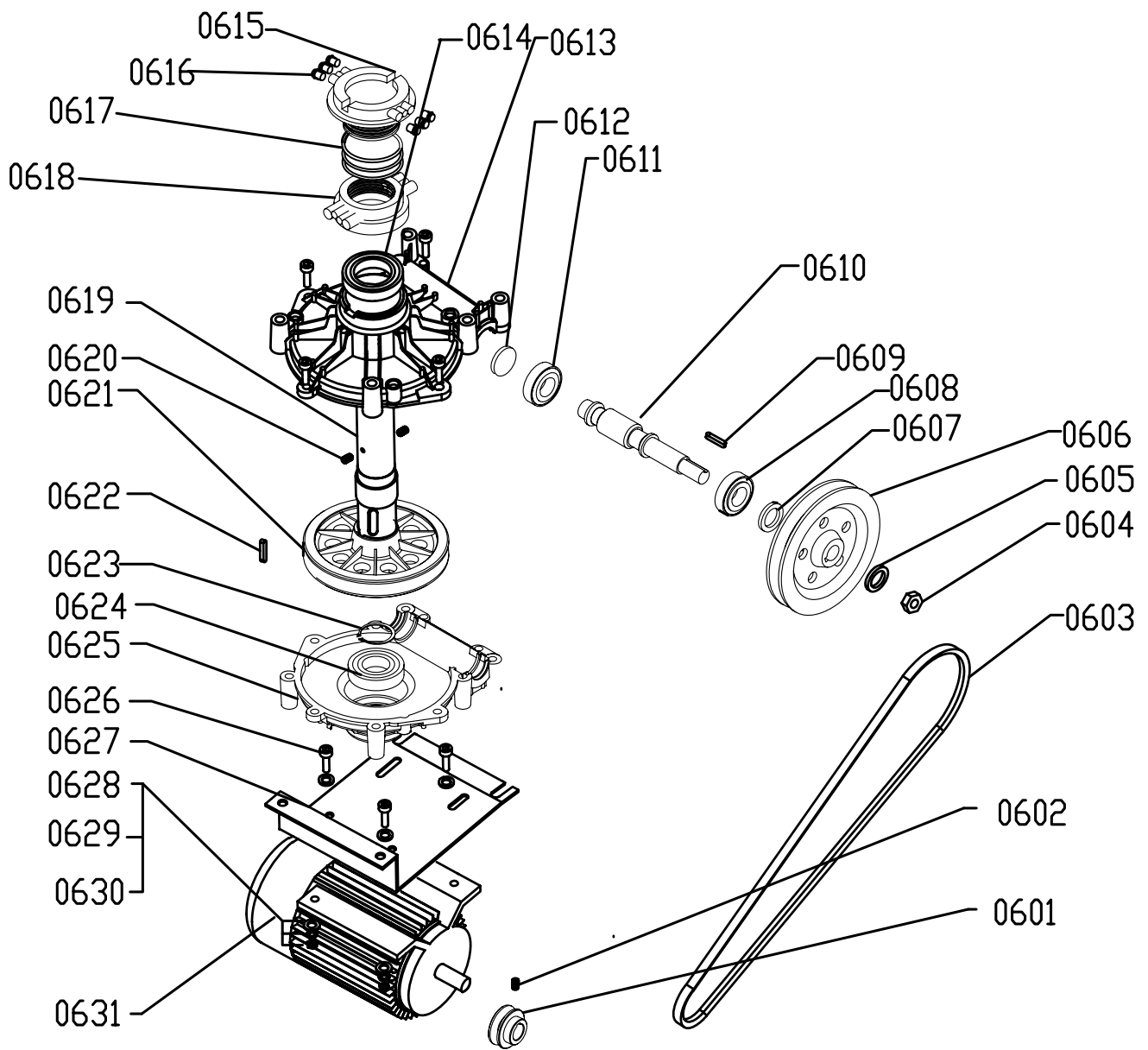


| | | |
|------|------------------------------------|---|
| 0413 | Inner hexagonal bolt M6×20 | 4 |
| 0414 | Stop block | 2 |
| 0415 | Positioning block | 2 |
| 0416 | Flat washer 4 | 2 |
| 0417 | Bolt Φ4x20 | 2 |
| 0418 | sunk screw | 4 |
| 0419 | Inner hexagonal bolt M6X16 | 1 |
| 0420 | nut M6 | 4 |
| 0421 | Transition switch | 1 |
| 0422 | Transition switch lever | 1 |
| 0423 | Flat washer 6 | 1 |
| 0424 | nut M6 | 1 |
| 0425 | Screw M4×16 | 2 |
| 0426 | Sping washer 6 | 2 |
| 0427 | Flat washer 6 | 2 |
| 0428 | Flat washer 5 | 1 |
| 0429 | Self locking nutM5 | 2 |
| 0430 | Transition switch holder | 1 |
| 0431 | Inner hexagonal bolt M5×16 | 2 |
| 0432 | Flat washer 5 | 2 |
| 0433 | Inner hexagonal bolt 8×20 | 1 |
| 0434 | Flat washer | 1 |
| 0435 | Spring holder | 1 |
| 0436 | removable holder | 3 |
| 0437 | lever switch | 1 |
| 0438 | Snap ring for shaft 14 | 2 |
| 0439 | Inner hexagonal bolt M8×20 | 1 |
| 0440 | Flat washer8 | 1 |
| 0441 | Self locking nut M8 | 1 |
| 0442 | Inner hexagonal bolt M8×50 | 1 |
| 0443 | Nut M8 | 1 |
| 0444 | spring | 1 |
| 0445 | Control desk shaft | 1 |
| 0446 | Pedal sheath | 2 |
| 0447 | Pedal plate | 4 |
| 0448 | Flat washer 8 | 2 |
| 0449 | Self locking nut M8 | 2 |
| 0450 | Pull lever | 2 |
| 0451 | Spring | 3 |
| 0452 | Removable bracket stoping block | 3 |
| 0453 | Control desk support | 1 |
| 0454 | Self locking nut M8 | 1 |

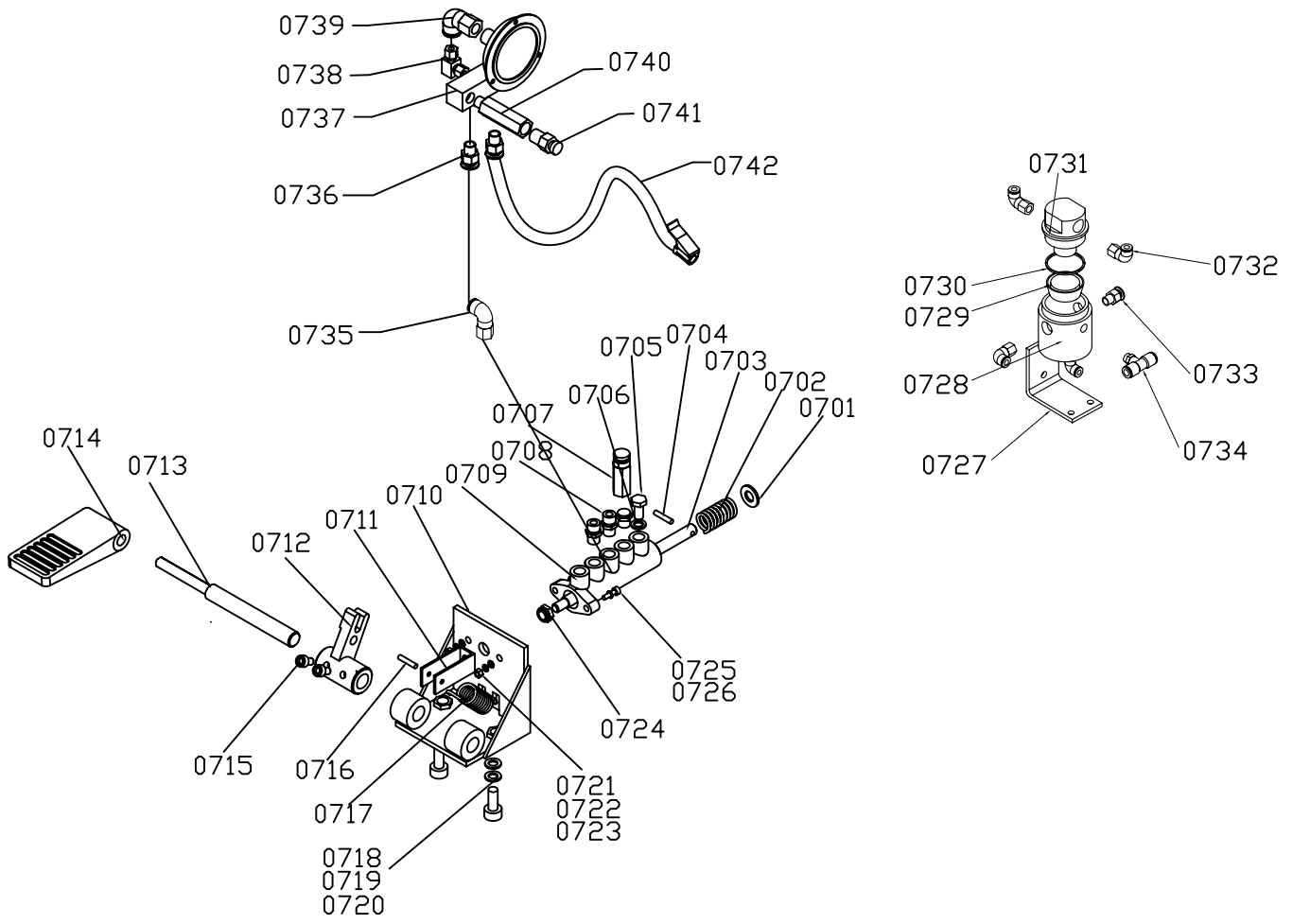


| NO. | NAME | PTY |
|------|---------------------------------|-----|
| 0501 | Self lock nut M12 | 2 |
| 0502 | Nut M6 | 12 |
| 0503 | L connector | 2 |
| 0504 | cylinder body \varnothing 186 | 1 |
| 0505 | Flat washer | 1 |
| 0506 | Piston | 1 |
| 0507 | Piston rod | 1 |
| 0508 | O ring 16X2.4 | 2 |
| 0509 | Y ring 186X12X9 | 2 |
| 0510 | Flat washer 12 | 2 |
| 0511 | Big washer | 2 |
| 0512 | O ring \varnothing 185X5.7 | 2 |
| 0513 | Big cylinder front cover | 1 |
| 0514 | O ring 24X2.4 | 2 |
| 0515 | Snap ring for holes | 1 |
| 0516 | Shaft bolt | 1 |
| 0517 | Bead breaker holder | 1 |
| 0518 | Flat washer 16 | 1 |
| 0519 | Snap ring for shaft 16 | 1 |
| 0520 | Shocking pad | 1 |
| 0521 | Self lock nut M16 | 1 |

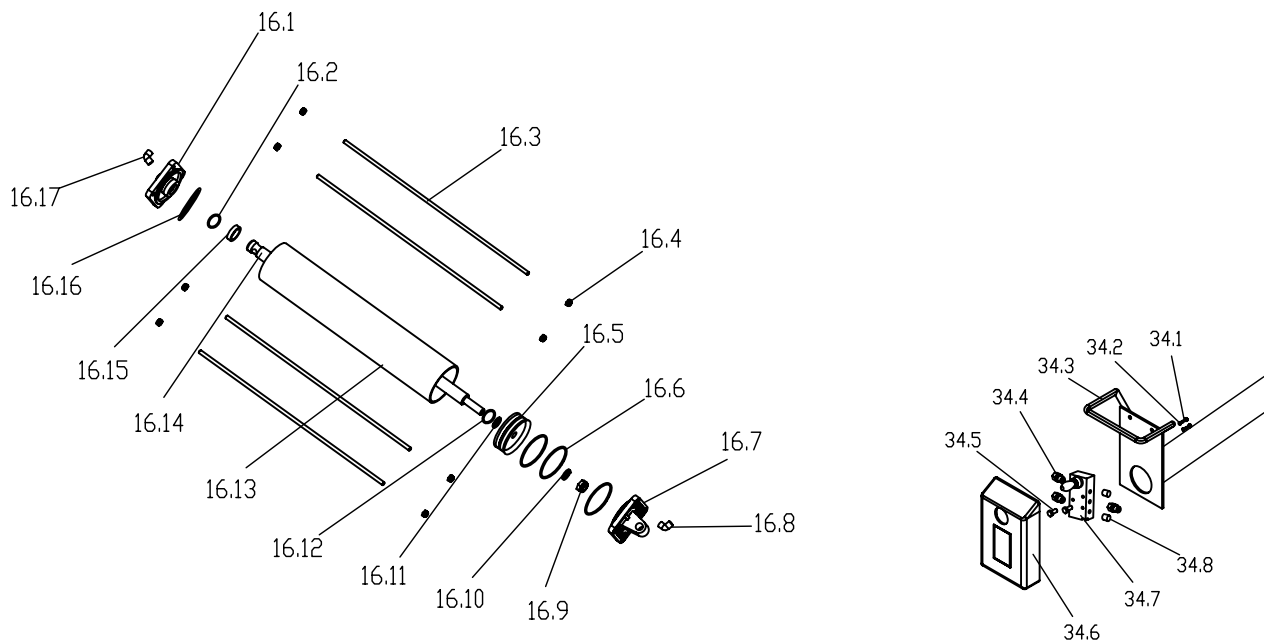
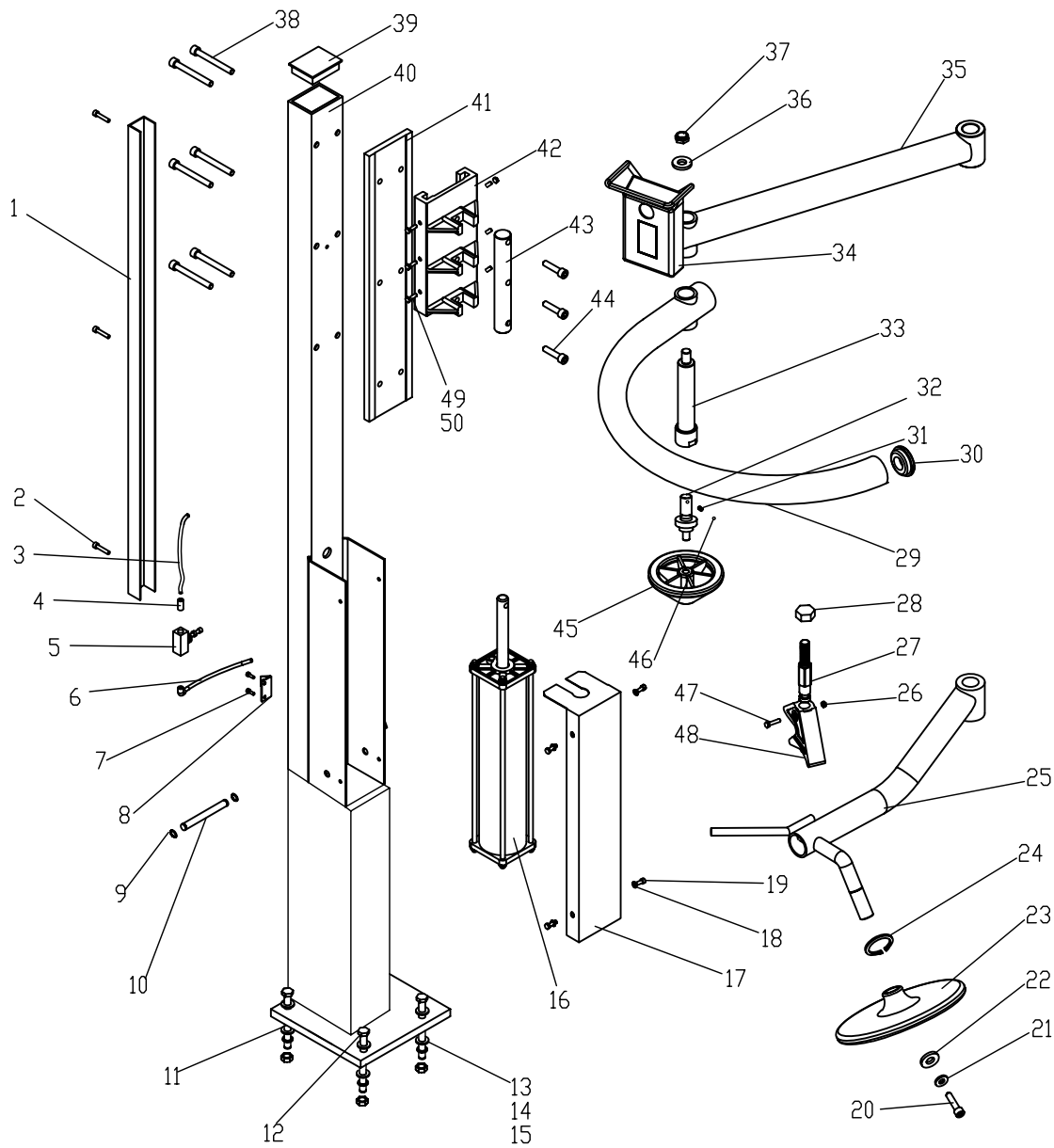
| | | |
|------|-------------------------|----|
| 0522 | Cover nut M12 | 1 |
| 0523 | Spring washer 12 | 1 |
| 0524 | Flat washer 12 | 1 |
| 0525 | Hexagonal bolt M12X25 | 2 |
| 0526 | bead break blade | 1 |
| 0527 | Inner hexagonal bolt M6 | 12 |
| 0528 | Handle sleeve | 1 |
| | | |
| | | |
| | | |
| | | |
| | | |



| No. | NAME | QTY |
|------|------------------------------------|-----|
| 0601 | Motor sheave | 1 |
| 0602 | Bolt | 1 |
| 0603 | Delta belt | 1 |
| 0604 | Nut M16 | 1 |
| 0605 | Flat washer | 4 |
| 0606 | Big Sheave | 1 |
| 0607 | Seal ring frame | 1 |
| 0608 | Bearing 30205 | 1 |
| 0609 | Flat key | 1 |
| 0610 | Worm screw | 1 |
| 0611 | Bearing 30205 | 1 |
| 0612 | Oil lock | 1 |
| 0613 | Upper part for worm gear cabinet | 1 |
| 0614 | Bearing 6010 | 1 |
| 0615 | Inner sheath of distribution valve | 1 |
| 0616 | Quick insert connector | 4 |
| 0617 | O ring 60x2.25 | 3 |
| 0618 | Outer sheath of distribution valve | 1 |
| 0619 | Principal shaft | 1 |
| 0620 | Fixing bolt | 4 |
| 0621 | gear | 1 |
| 0622 | Flat key | 1 |
| 0623 | Snap ring for shaft | 1 |
| 0624 | Bearing 6208 | 1 |
| 0625 | Nether part for worm gear cabinet | 1 |
| 0626 | Hexagonal bolt | 4 |
| 0627 | Supporting board for Motor | 1 |
| 0628 | Shock absorption washer of Motor | 4 |
| 0629 | Flat washer | 8 |
| 0630 | Nut M8 | 4 |
| 0631 | Motor | 1 |
| | | |
| | | |



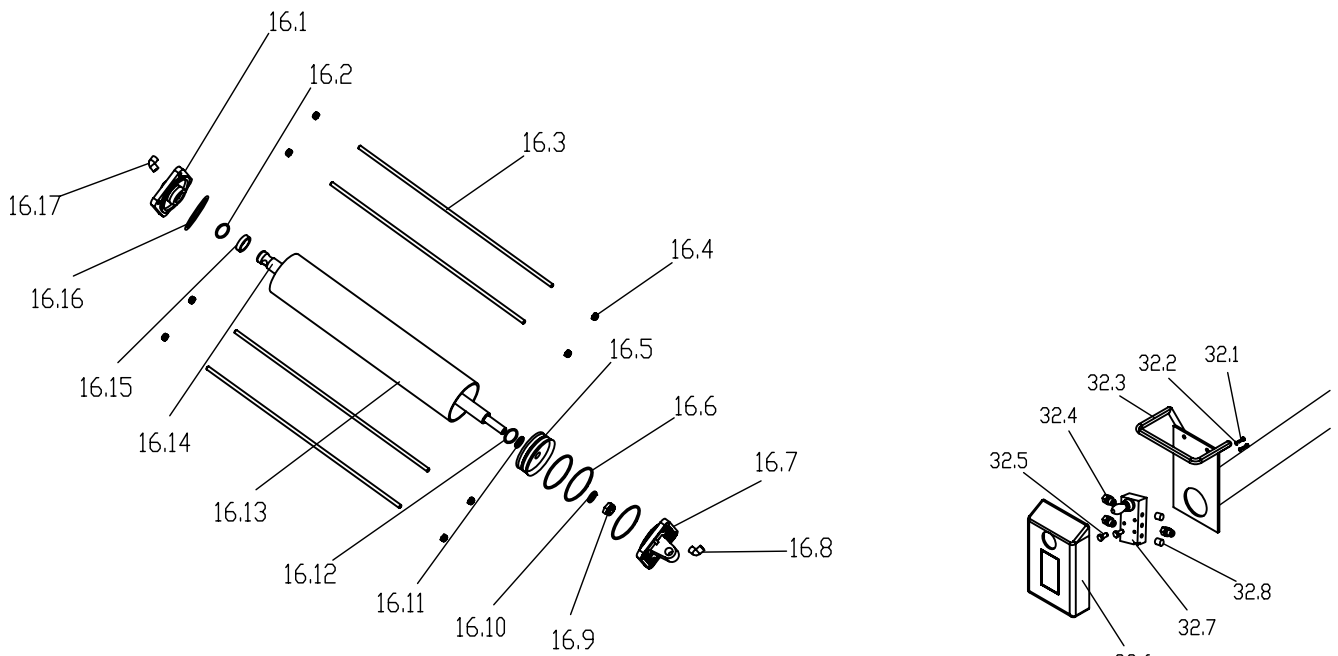
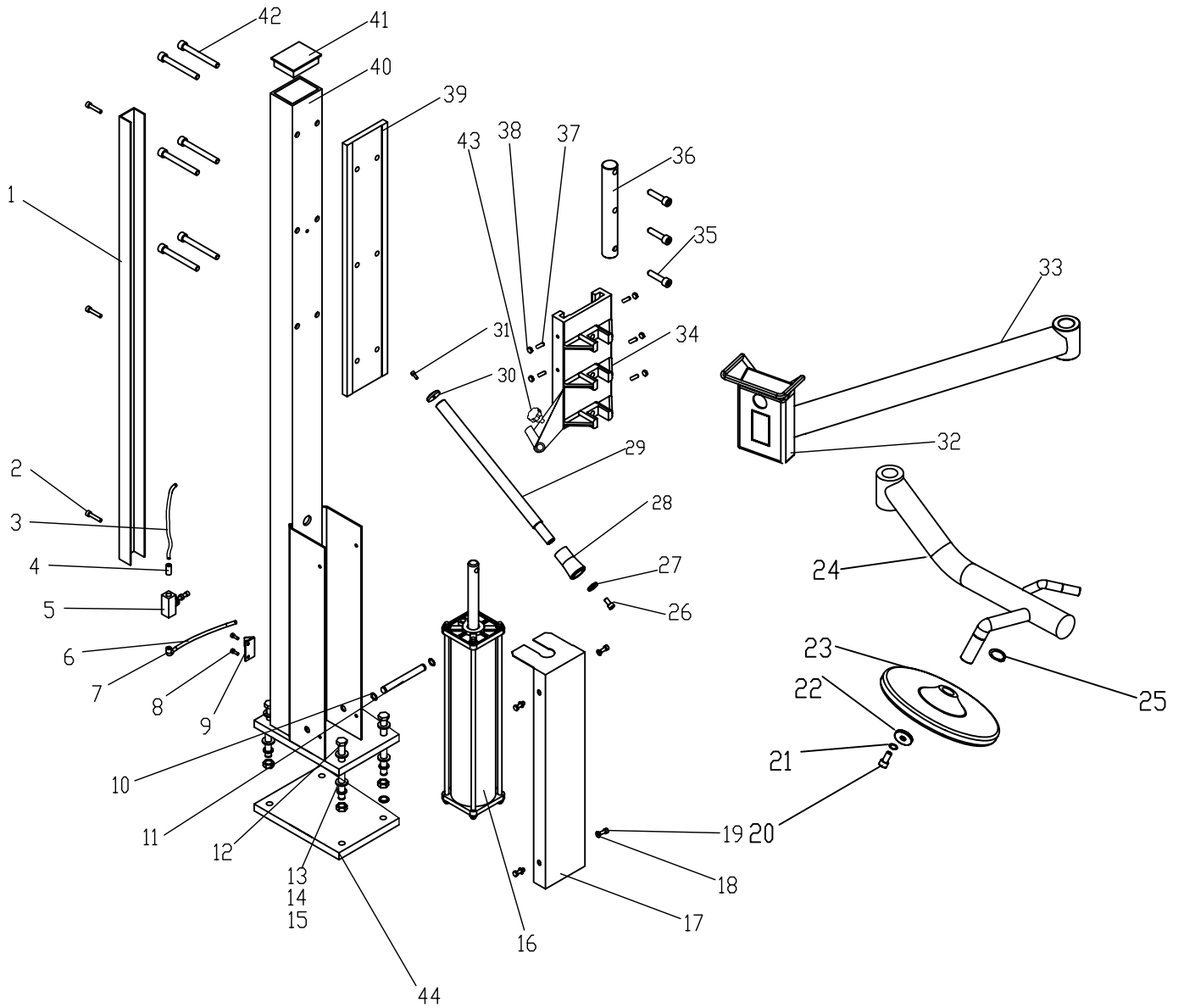
| NO. | NAME | PTY |
|------|--|-----|
| 0701 | Flat washer 10 | 1 |
| 0702 | Inflation spring | 1 |
| 0703 | Valve staff | 1 |
| 0704 | Expansion pin | 1 |
| 0705 | Outer hexagonal bolt | 1 |
| 0706 | Flat washer | 1 |
| 0707 | valve | 1 |
| 0708 | Quick insert connector | 3 |
| 0709 | Valve assembly | 1 |
| 0710 | Inflation controlling assembly bracket | 1 |
| 0711 | removable holder | 1 |
| 0712 | Pull lever end of inflation valve | 1 |
| 0713 | Axle of inflation controlling assembly | 1 |
| 0714 | Inflation pedal | 1 |
| 0715 | Inner hexagonal bolt M6X10 | 2 |
| 0716 | Expanding screw | 1 |
| 0717 | Spring | 1 |
| 0718 | Flat washer 8 | 2 |
| 0719 | Spring washer 8 | 2 |
| 0720 | Bolt M8 | 2 |
| 0721 | Nut 5 | 2 |
| 0722 | Spring washer 5 | 2 |
| 0723 | Flat washer 5 | 2 |
| 0724 | Self locking nut M8 | 1 |
| 0725 | Inner hexagonal bolt M5X25 | 2 |
| 0726 | Flat washer 5 | 2 |
| 0727 | Distribution valve bracket | 1 |
| 0728 | Distribution valve | 1 |
| 0729 | Piston | 1 |
| 0730 | O ring 45X2.65 | 1 |
| 0731 | Distribution valve cover | 1 |
| 0732 | L connector | 4 |
| 0733 | Direct connector | 1 |
| 0734 | T connector | 1 |
| 0735 | L connector | 1 |
| 0736 | Direct connector | 2 |
| 0737 | Air supply connector pedestal | 1 |
| 0738 | L connector | 1 |
| 0739 | L connector | 1 |
| 0740 | Air release valve connector pipe | 1 |
| 0741 | Air release valve | 1 |
| 0742 | Inflation gun | 1 |



Left Rebot Arm

| NO. | NAME | QTY |
|-----|----------------------------------|-----|
| 1 | Pipe cover | 1 |
| 2 | Inner hexagonal bolt M6X40 | 3 |
| 3 | Pipe PU 6X4 | |
| 4 | Direct connector | 1 |
| 5 | flow adjusting valve | 1 |
| 6 | Pipe PU | 1 |
| 7 | bolt M4X16 | 2 |
| 8 | Throttle holder | 1 |
| 9 | snap ring for shaft | 2 |
| 10 | cylinder fixing bolt | 1 |
| 11 | flat washer 10 | 4 |
| 12 | outer hexagonal bolt M10X130 | 4 |
| 13 | flat washer 10 | 4 |
| 14 | spring washer 10 | 4 |
| 15 | Nut 10 | 4 |
| 16 | small cylinder | 1 |
| 17 | cylingder protective board | 1 |
| 18 | flat washer 6 | 4 |
| 19 | Inner hexagonal bolt M6X10 | 4 |
| 20 | Inner hexagonal bolt M10X20 | 1 |
| 21 | spring washer 10 | 1 |
| 22 | big washer | 1 |
| 23 | tray | 1 |
| 24 | snap ring for shaft 25 | 1 |
| 25 | tire holding arm | 1 |
| 26 | nut M6 | 1 |
| 27 | spin shaft of tire pressing head | 1 |

| | | |
|----|------------------------------------|---|
| 28 | hexagonal bolt | 1 |
| 29 | bend arm for tire pressing | 1 |
| 30 | seal of bend arm for tire pressing | 1 |
| 31 | spring | 1 |
| 32 | centering cone rod | 1 |
| 33 | spin shaft for tire pressing | 1 |
| 34 | controlling valve box | 1 |
| 35 | swing arm for tire pressing | 1 |
| 36 | flat washer | 1 |
| 37 | self lock nut M16 | 1 |
| 38 | inner hexagonal bolt M10X70 | 6 |
| 39 | dustproof cover | 1 |
| 40 | tower arm | 1 |
| 41 | slideway | 1 |
| 42 | slide board | 1 |
| 43 | fix shaft | 1 |
| 44 | inner hexagonal bolt M10X50 | 3 |
| 45 | centering cone | 1 |
| 46 | little steel ball | 1 |
| 47 | inner hexagonal bolt M6X30 | 1 |
| 48 | tire pressing head | 1 |
| 49 | fix bolt M10X25 | 6 |
| 50 | Nut M10 | 6 |



Right Rebot Arm

| NO. | NAME | QTY |
|-----|------------------------------|-----|
| 1 | Pipe cover | 1 |
| 2 | Inner hexagonal bolt M6X40 | 3 |
| 3 | Pipe PU 6X4 | |
| 4 | Direct connector | 1 |
| 5 | flow adjusting valve | 1 |
| 6 | Pipe PU | 1 |
| 7 | L connector | 1 |
| 8 | bolt M4X16 | 2 |
| 9 | Throttle holder | 1 |
| 10 | cylinder fixing bolt | 1 |
| 11 | snap ring for shaft | 2 |
| 12 | outer hexagonal bolt M10X130 | 4 |
| 13 | flat washer 10 | 4 |
| 14 | spring washer 10 | 4 |
| 15 | Nut 10 | 4 |
| 16 | small cylinder | 1 |
| 17 | cylinder protective board | 1 |
| 18 | flat washer 6 | 4 |
| 19 | Inner hexagonal bolt M6X10 | 4 |
| 20 | Inner hexagonal bolt M10X20 | 1 |
| 21 | spring washer 10 | 1 |
| 22 | big washer | 1 |
| 23 | tray | 1 |
| 24 | tire holding arm | 1 |
| 25 | spring washer 25 | 1 |
| 26 | Inner hexagonal bolt M10X20 | 1 |
| 27 | washer for tire pressing rod | 1 |

| | | |
|----|--------------------------------|---|
| 28 | tire pressing rod | 1 |
| 29 | tire pressing shaft | 1 |
| 30 | washer for tire pressing shaft | 1 |
| 31 | bolt M6X16 | 1 |
| 32 | controlling valve box | 1 |
| 33 | swing arm for tire pressing | 1 |
| 34 | slide board | 1 |
| 35 | inner hexagonal bolt M10X50 | 3 |
| 36 | fix shaft | 1 |
| 37 | fix bolt M10X25 | 5 |
| 38 | Nut M10 | 5 |
| 39 | slideway | 1 |
| 40 | tower arm | 1 |
| 41 | dustproof cover | 1 |
| 42 | inner hexagonal bolt M10X70 | 6 |
| 43 | handle wheel | 1 |
| 44 | board | 1 |
| | | |