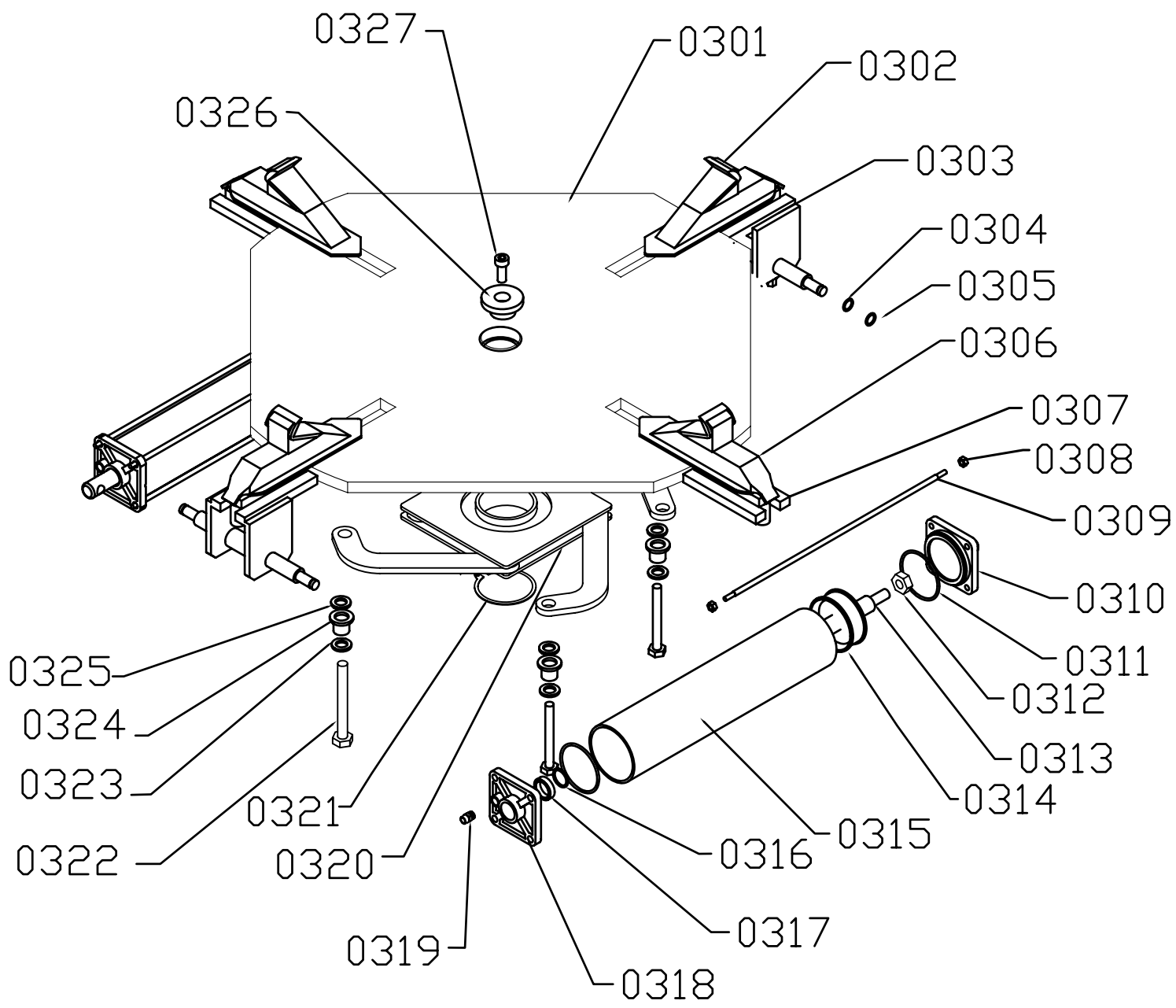
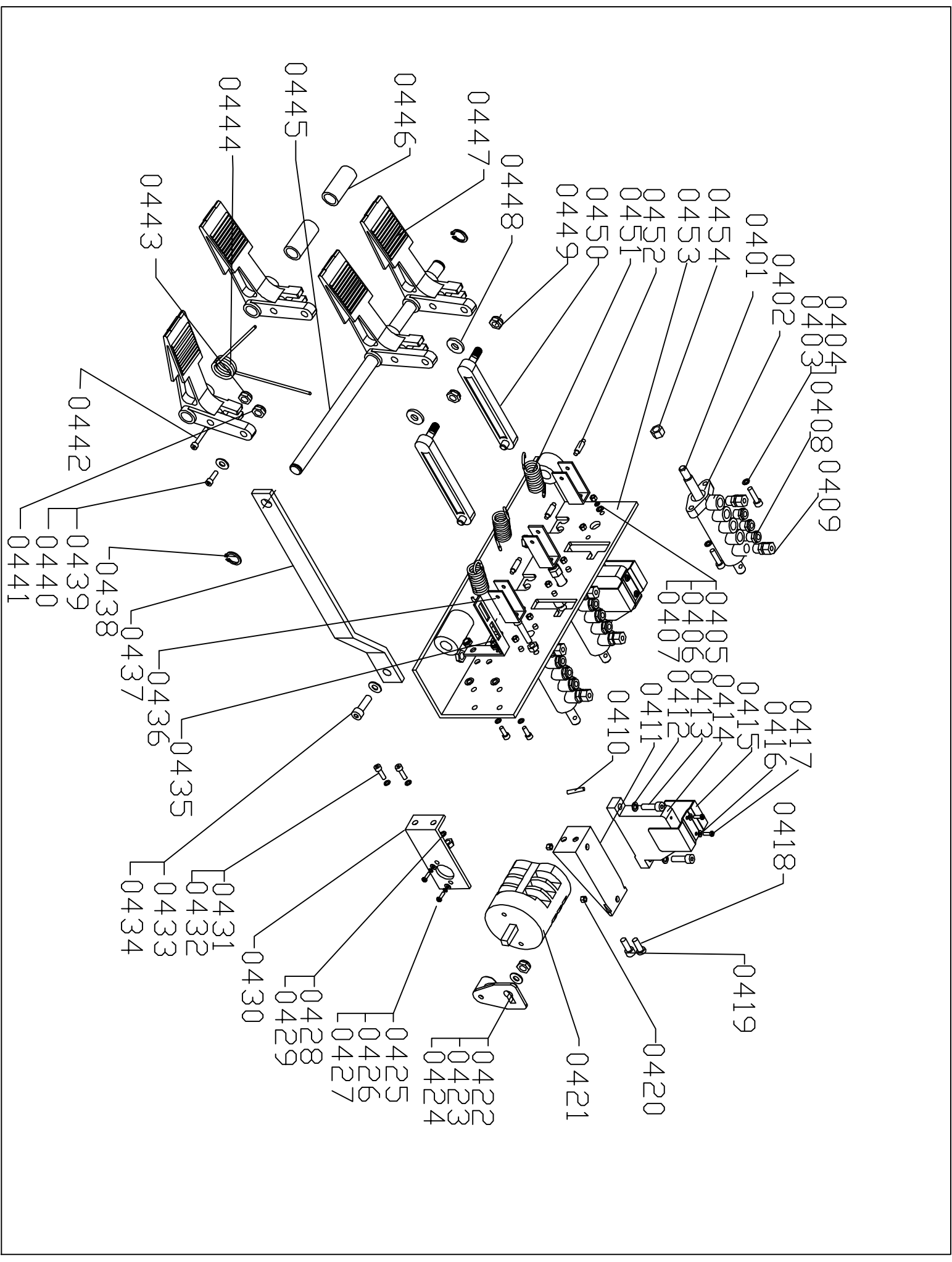
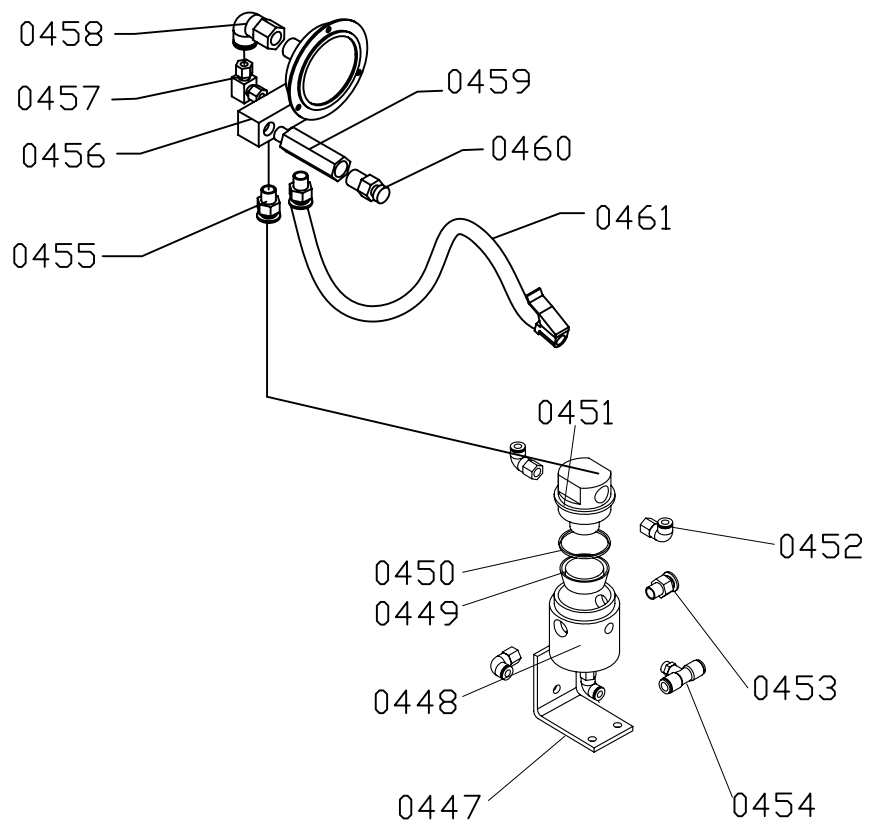


|      |                               |   |
|------|-------------------------------|---|
| 0201 | swing arm pin                 | 1 |
| 0202 | Tower arm                     | 1 |
| 0203 | Swing arm pin wahser          | 1 |
| 0204 | Anti-loosing nut M16          | 1 |
| 0205 | air gauge box                 | 1 |
| 0206 | air connector                 | 1 |
| 0207 | Outer Hexagonal bolt M12×70   | 4 |
| 0208 | Spring washer Φ 12            | 4 |
| 0209 | Flat washer Φ12               | 4 |
| 0210 | Inner hexagonal bolt M6×4     | 1 |
| 0211 | Locking bolt 5x22             | 1 |
| 0212 | demounting head roller        | 1 |
| 0213 | Pressure washer               | 1 |
| 0214 | Spring washer Φ 12            | 1 |
| 0215 | Outer Hexagonal bolt M12×25   | 1 |
| 0216 | Inner hexagonal bolt          | 2 |
| 0217 | Duckhead                      | 1 |
| 0218 | Shocking pad of duckhead      | 1 |
| 0219 | pressure gauge                | 1 |
| 0220 | Cross shape bolt              | 3 |
| 0221 | Hexagonal shaft               | 1 |
| 0222 | Swing Arm                     | 1 |
| 0223 | Lock handle                   | 1 |
| 0224 | Lock plate                    | 1 |
| 0225 | locking nut M10               | 1 |
| 0226 | protection cover              | 1 |
| 0227 | Press springfor hexagonalaxis | 1 |
| 0228 | Cap for hexagonal axis        | 1 |
| 0229 | Inner hexagonal boltM8×25     | 1 |
| 0230 | locking nut M10               | 1 |
| 0231 | ExternalHexagonal bolt M10×30 | 1 |
| 0232 | Limited position handle       | 1 |
| 0233 | Air pressure gauge            | 1 |



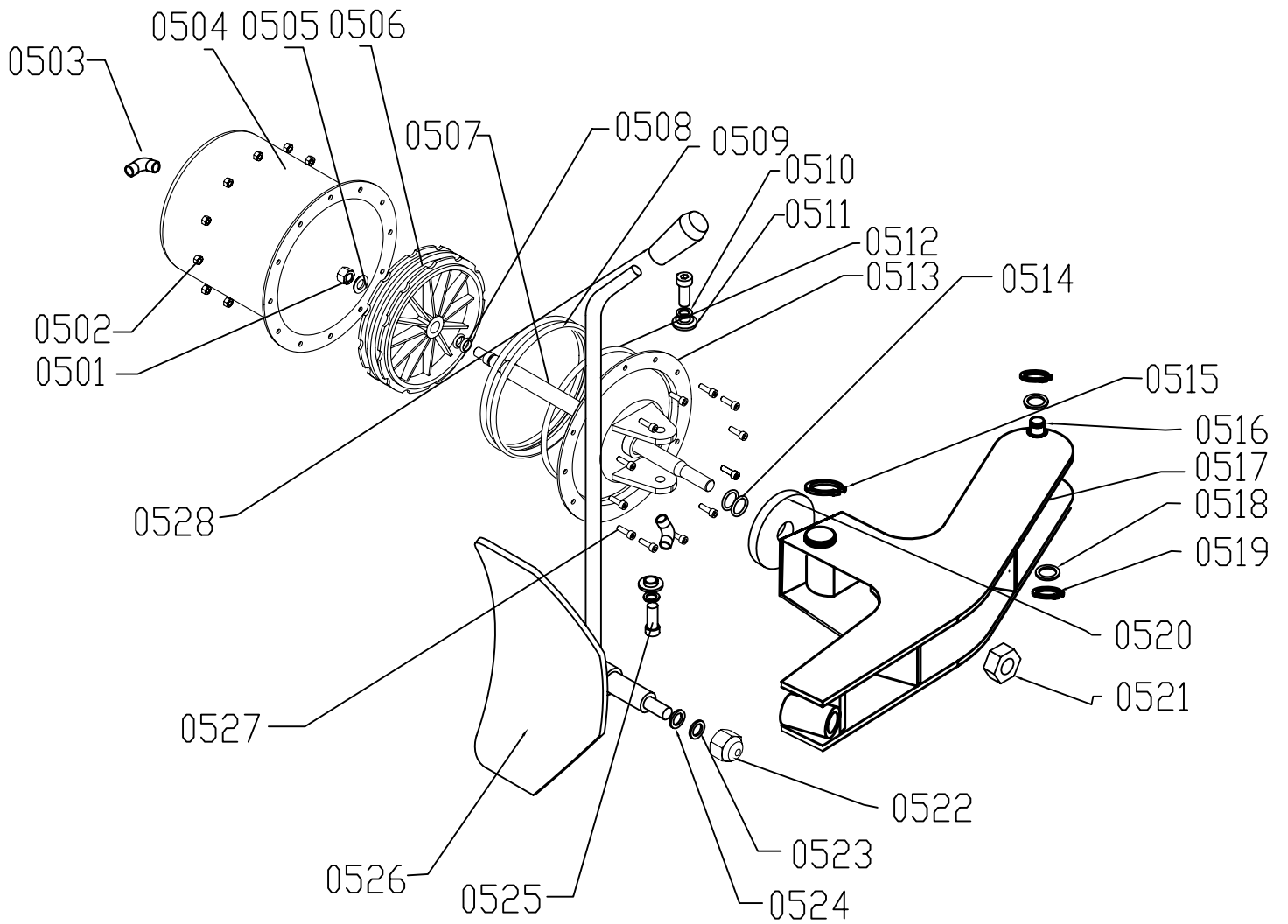
| NO.  | NAME                        | QTY |
|------|-----------------------------|-----|
| 0301 | Turn table                  | 1   |
| 0302 | Clamp                       | 4   |
| 0303 | Suspension frame            | 2   |
| 0304 | Flat washer 12              | 8   |
| 0305 | Snap ring for shaft 12      | 8   |
| 0306 | Sliding block               | 4   |
| 0307 | Sliding board on turn table | 4   |
| 0308 | Self stop nut M6            | 16  |
| 0309 | Bolt rod                    | 8   |
| 0310 | Small cylinder back cover   | 2   |
| 0311 | O ring 60x2.65              | 4   |
| 0312 | Self stop nut M12           | 2   |
| 0313 | Piston shaft                | 2   |
| 0314 | Piston                      | 2   |
| 0315 | Container                   | 2   |
| 0316 | O ring 24x2.4               | 2   |
| 0317 | Y ring 28x20x5              | 2   |
| 0318 | Small cylinder front cover  | 2   |
| 0319 | Connector                   | 4   |
| 0320 | Secondary turn table        | 1   |
| 0321 | Snap ring for shaft 65      | 1   |
| 0322 | Inner hexagonal bolt M12x90 | 4   |
| 0323 | Flat washer 12              | 4   |
| 0324 | Director sleeve             | 4   |
| 0325 | Flat washer                 | 4   |
| 0326 | Press washer                | 1   |
| 0327 | Inner hexagonal bolt M12x30 | 1   |
|      |                             |     |
|      |                             |     |
|      |                             |     |
|      |                             |     |
|      |                             |     |





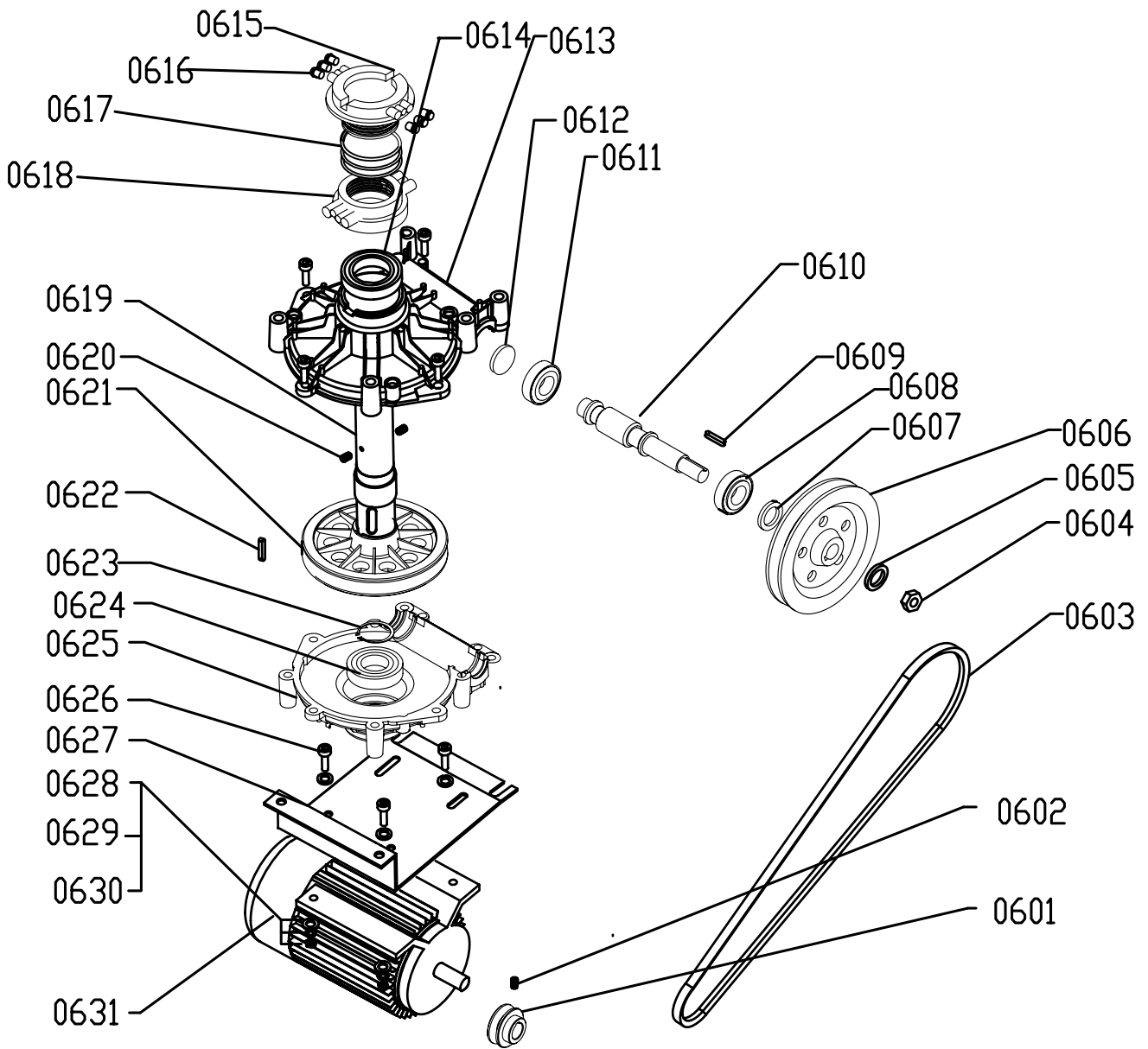


|      |                                    |   |
|------|------------------------------------|---|
| 0413 | Inner hexagonal bolt M6×20         | 4 |
| 0414 | Stop block                         | 2 |
| 0415 | Positioning block                  | 2 |
| 0416 | Flat washer 4                      | 2 |
| 0417 | Bolt Φ4x20                         | 2 |
| 0418 | sunk screw                         | 4 |
| 0419 | Inner hexagonal bolt M6X16         | 1 |
| 0420 | nut M6                             | 4 |
| 0421 | Transition switch                  | 1 |
| 0422 | Transition switch lever            | 1 |
| 0423 | Flat washer 6                      | 1 |
| 0424 | nut M6                             | 1 |
| 0425 | Screw M4×16                        | 2 |
| 0426 | Sping washer 6                     | 2 |
| 0427 | Flat washer 6                      | 2 |
| 0428 | Flat washer 5                      | 1 |
| 0429 | Self locking nutM5                 | 2 |
| 0430 | Transition switch holder           | 1 |
| 0431 | Inner hexagonal bolt M5×16         | 2 |
| 0432 | Flat washer 5                      | 2 |
| 0433 | Inner hexagonal bolt 8×20          | 1 |
| 0434 | Flat washer                        | 1 |
| 0435 | Spring holder                      | 1 |
| 0436 | removable holder                   | 3 |
| 0437 | lever switch                       | 1 |
| 0438 | Snap ring for shaft 14             | 2 |
| 0439 | Inner hexagonal bolt M8×20         | 1 |
| 0440 | Flat washer8                       | 1 |
| 0441 | Self locking nut M8                | 1 |
| 0442 | Inner hexagonal bolt M8×50         | 1 |
| 0443 | Nut M8                             | 1 |
| 0444 | spring                             | 1 |
| 0445 | Control desk shaft                 | 1 |
| 0446 | Pedal sheath                       | 2 |
| 0447 | Pedal plate                        | 4 |
| 0448 | Flat washer 8                      | 2 |
| 0449 | Self locking nut M8                | 2 |
| 0450 | Pull lever                         | 2 |
| 0451 | Spring                             | 3 |
| 0452 | Removable bracket stoping<br>block | 3 |
| 0453 | Control desk support               | 1 |
| 0454 | Self locking nut M8                | 1 |



| NO.  | NAME                            | PTY |
|------|---------------------------------|-----|
| 0501 | Self lock nut M12               | 2   |
| 0502 | Nut M6                          | 12  |
| 0503 | L connector                     | 2   |
| 0504 | cylinder body $\varnothing$ 186 | 1   |
| 0505 | Flat washer                     | 1   |
| 0506 | Piston                          | 1   |
| 0507 | Piston rod                      | 1   |
| 0508 | O ring 16X2.4                   | 2   |
| 0509 | Y ring 186X12X9                 | 2   |
| 0510 | Flat washer 12                  | 2   |
| 0511 | Big washer                      | 2   |
| 0512 | O ring $\varnothing$ 185X5.7    | 2   |
| 0513 | Big cylinder front cover        | 1   |
| 0514 | O ring 24X2.4                   | 2   |
| 0515 | Snap ring for holes             | 1   |
| 0516 | Shaft bolt                      | 1   |
| 0517 | Bead breaker holder             | 1   |
| 0518 | Flat washer 16                  | 1   |
| 0519 | Snap ring for shaft 16          | 1   |
| 0520 | Shocking pad                    | 1   |
| 0521 | Self lock nut M16               | 1   |

|      |                         |    |
|------|-------------------------|----|
| 0522 | Cover nut M12           | 1  |
| 0523 | Spring washer 12        | 1  |
| 0524 | Flat washer 12          | 1  |
| 0525 | Hexagonal bolt M12X25   | 2  |
| 0526 | bead break blade        | 1  |
| 0527 | Inner hexagonal bolt M6 | 12 |
| 0528 | Handle sleeve           | 1  |
|      |                         |    |
|      |                         |    |
|      |                         |    |
|      |                         |    |
|      |                         |    |



| No.  | NAME                               | QTY |
|------|------------------------------------|-----|
| 0601 | Motor sheave                       | 1   |
| 0602 | Bolt                               | 1   |
| 0603 | Delta belt                         | 1   |
| 0604 | Nut M16                            | 1   |
| 0605 | Flat washer                        | 4   |
| 0606 | Big Sheave                         | 1   |
| 0607 | Seal ring frame                    | 1   |
| 0608 | Bearing 30205                      | 1   |
| 0609 | Flat key                           | 1   |
| 0610 | Worm screw                         | 1   |
| 0611 | Bearing 30205                      | 1   |
| 0612 | Oil lock                           | 1   |
| 0613 | Upper part for worm gear cabinet   | 1   |
| 0614 | Bearing 6010                       | 1   |
| 0615 | Inner sheath of distribution valve | 1   |
| 0616 | Quick insert connector             | 4   |
| 0617 | O ring 60x2.25                     | 3   |
| 0618 | Outer sheath of distribution valve | 1   |
| 0619 | Principal shaft                    | 1   |
| 0620 | Fixing bolt                        | 4   |
| 0621 | gear                               | 1   |
| 0622 | Flat key                           | 1   |
| 0623 | Snap ring for shaft                | 1   |
| 0624 | Bearing 6208                       | 1   |
| 0625 | Nether part for worm gear cabinet  | 1   |
| 0626 | Hexagonal bolt                     | 4   |
| 0627 | Supporting board for Motor         | 1   |
| 0628 | Shock absorption washer of Motor   | 4   |
| 0629 | Flat washer                        | 8   |
| 0630 | Nut M8                             | 4   |
| 0631 | Motor                              | 1   |
|      |                                    |     |
|      |                                    |     |