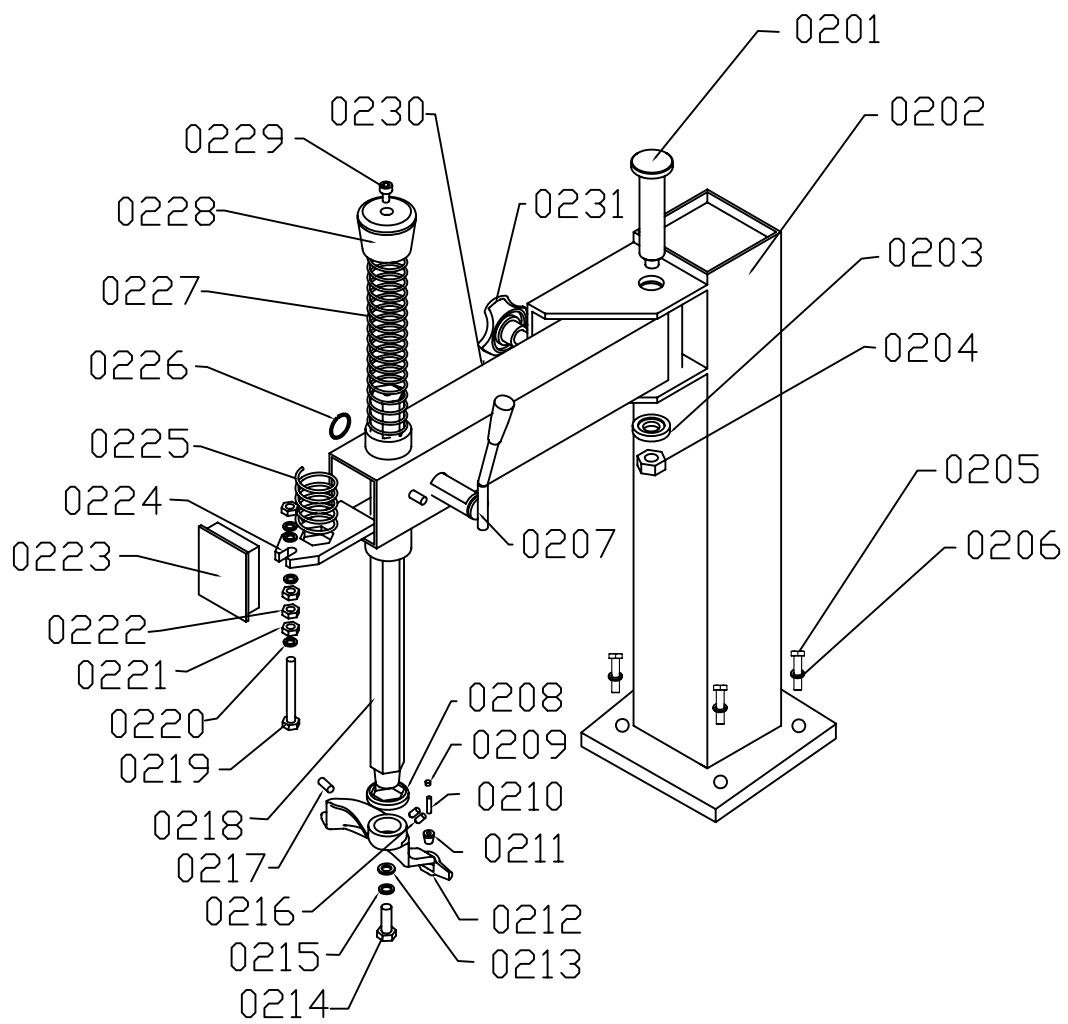
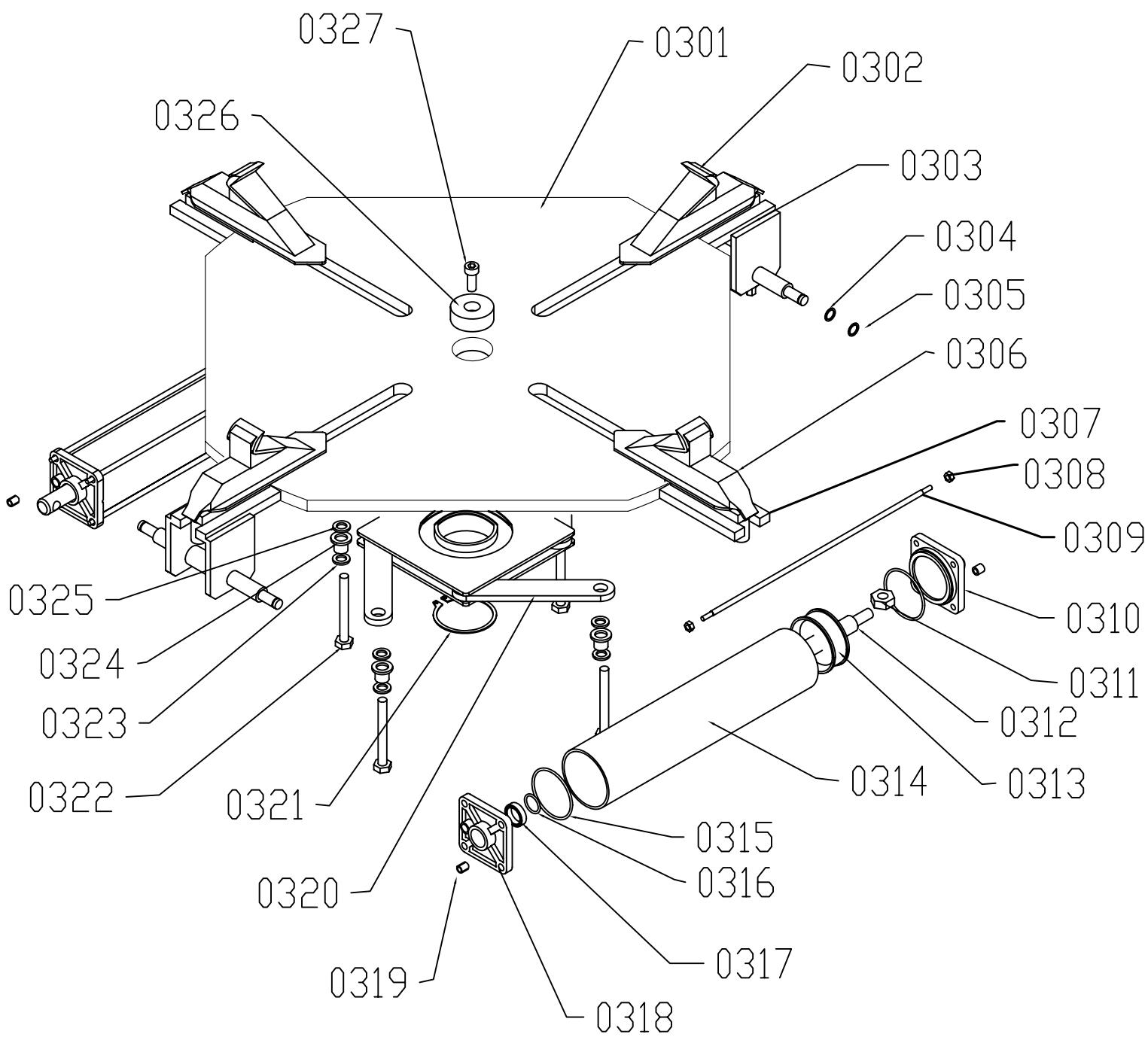


LT-4XX Exploded drawing list

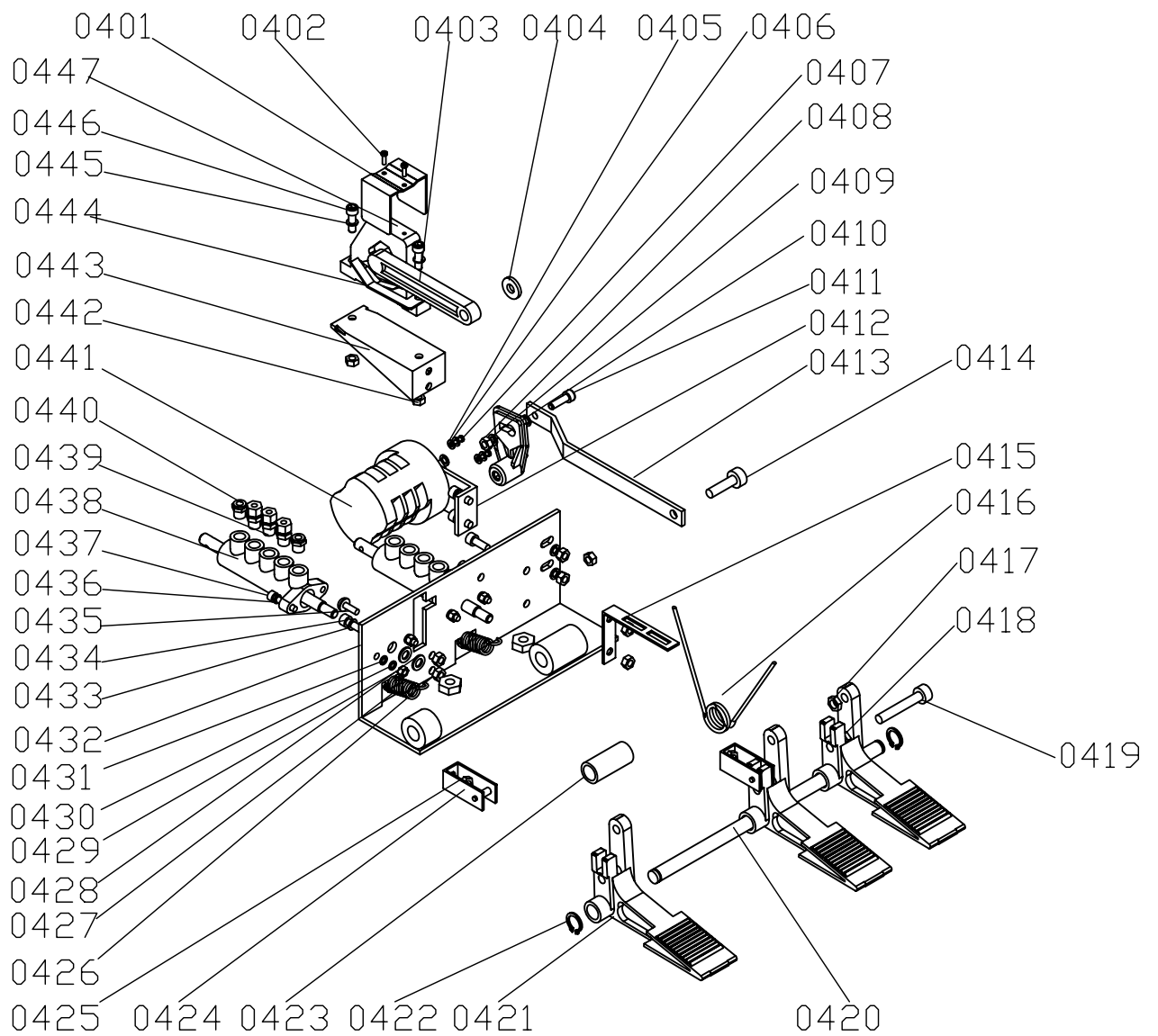
| Sl. No. | Description | QTY |
|---------|--|-----|
| 0101 | Cabinet | 1 |
| 0102 | Crow | 1 |
| 0103 | Corner Rubber | 4 |
| 0104 | bead break blade protection Rubber | 2 |
| 0105 | Inner hexagonal bolt M8×25 | 6 |
| 0106 | Tool crib | 1 |
| 0107 | Spring of bead break blade | 1 |
| 0108 | Inner direct connector of Oil Segregator | 1 |
| 0109 | Oil Segregator | 1 |
| 0110 | Inner inserter of Oil Segregator | 1 |
| 0111 | Bolt 4 x 8 | 2 |
| 0112 | Bolt 6 x 10 | 2 |
| 0113 | Plastic box | 1 |
| 0114 | Plastic box cover | 1 |
| 0115 | Brush | 1 |
| 0116 | Bolt M6 x 12 | 1 |
| 0117 | Washer 6 | 1 |
| 0118 | Power supply wire | 1 |
| 0119 | Clip | 1 |
| 0120 | Side board δ | 1 |
| 0121 | Bolt M5X12 | 4 |
| | | |
| | | |
| | | |
| | | |
| | | |



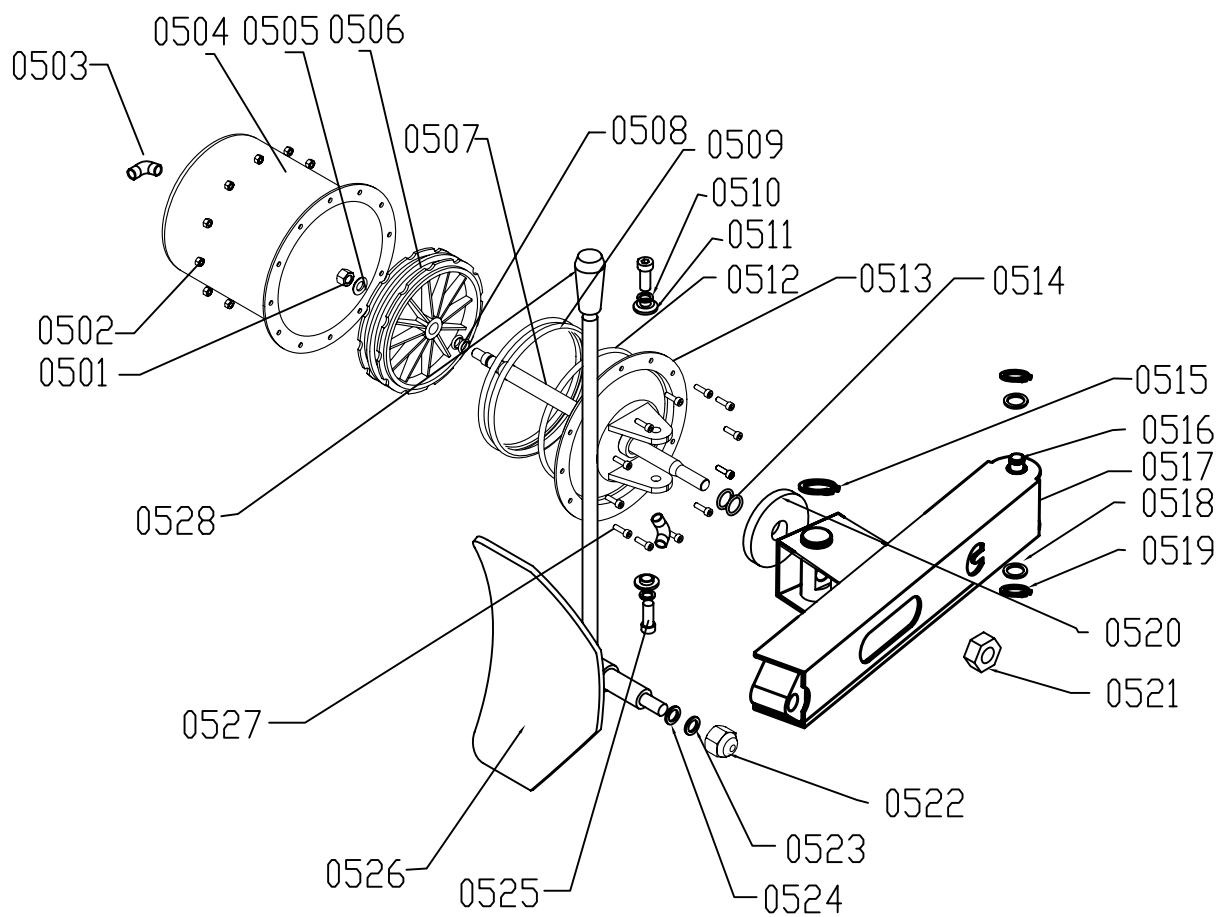
| | | |
|------|---|---|
| 0201 | swing arm pin | 1 |
| 0202 | Tower arm welding | 1 |
| 0203 | Swing arm pin wahser $\delta = 8$ | 1 |
| 0204 | Anti-loosing nut M16 | 1 |
| 0205 | Hexagonal bolt M12 \times 30 | 4 |
| 0206 | Flat washer $\Phi 12$ | 4 |
| 0207 | Locking bolt | 1 |
| 0208 | Shocking pad of duckhead | 1 |
| 0209 | Inner hexagonal bolt M6 \times 4 | 1 |
| 0210 | Cylinder pin 5 \times 22 | 1 |
| 0211 | demounting head roller | 1 |
| 0212 | Duckhead | 1 |
| 0213 | Washer of demounting head | 1 |
| 0214 | ExternalHexagonal bolt M12 \times 25 | 1 |
| 0215 | Sping washer $\Phi 12$ | 1 |
| 0216 | Internal Hexagonal bolt M12 \times 12 | 2 |
| 0217 | Hexagonal bolt M12 \times 16 | 2 |
| 0218 | Hexagonal shaft | 1 |
| 0219 | ExternalHexagonal bolt M10 \times 90 | 1 |
| 0220 | Flat washer $\Phi 10$ | 4 |
| 0221 | nut M10 | 1 |
| 0222 | locking nut M10 | 2 |
| 0223 | protection cover | 1 |
| 0224 | Lock plate | 1 |
| 0225 | Lock pressure spring | 1 |
| 0226 | Snap ring for shaft 30 | 2 |
| 0227 | Press springfor hexagonalaxis | 1 |
| 0228 | Cap for hexagonal axis | 1 |
| 0229 | Inner hexagonal boltM8 \times 20 | 1 |
| 0230 | Swing Arm | 1 |
| 0231 | Limited position handle | 1 |



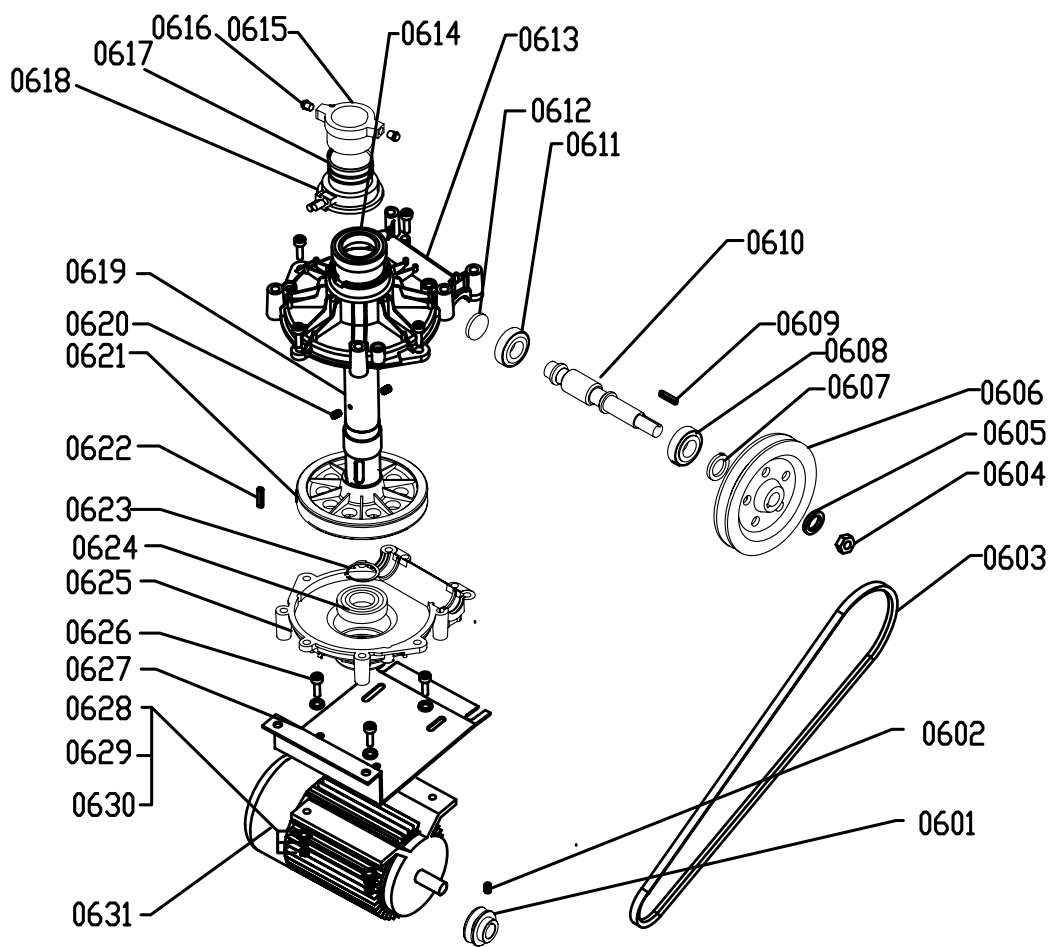
| | | |
|------|--------------------------------------|----|
| | | |
| | | |
| 0301 | Turntable | 1 |
| 0302 | Claw | 4 |
| 0303 | welding for slide suspension frame | 2 |
| 0304 | Flat washer $\Phi 12$ | 4 |
| 0305 | Snap ring for shaft 12 | 4 |
| 0306 | welding for slide suspension | 2 |
| 0307 | welding for slide board | 4 |
| 0308 | Anti-loosing nut M6 | 16 |
| 0309 | Connecting bar | 8 |
| 0310 | Cylinder rear cover | 2 |
| 0311 | Self locking nut M12 | 2 |
| 0312 | Piston lever | 2 |
| 0313 | Piston | 2 |
| 0314 | Small cylinder body | 2 |
| 0315 | O ring 60×2.65 | 4 |
| 0316 | O ring 24×2.4 | 2 |
| 0317 | Y ring $28 \times 20 \times 5$ | 2 |
| 0318 | Cylinder front cover | 2 |
| 0319 | Quick connector | 4 |
| 0320 | welding | 1 |
| 0321 | Snap ring for shaft 65 | 1 |
| 0322 | Inner hexagonal bolt $M10 \times 90$ | 8 |
| 0323 | Flat washer $\Phi 10$ | 4 |
| 0324 | collar | 4 |
| 0325 | Washer 10 | 4 |
| 0326 | Pressure washer | 1 |
| 0327 | Inner hexagonal bolt $M12 \times 30$ | 1 |
| | | |
| | | |



| | | |
|------|-------------------------------------|---|
| | | |
| 0401 | limited position board | 1 |
| 0402 | Bolt $\Phi 4 \times 10$ | 2 |
| 0403 | little pole | 1 |
| 0404 | Adjusting washer | 1 |
| 0405 | Spring washer | 4 |
| 0406 | Flat washer $\Phi 4$ | 3 |
| 0407 | Spring washer | 3 |
| 0408 | Bolt M4 $\times 10$ | 3 |
| 0409 | Nut M6 | 1 |
| 0410 | Washer 6 | 2 |
| 0411 | Inner hexagonal bolt M6 $\times 25$ | 1 |
| 0412 | Transition switch lever | 1 |
| 0413 | Transition switch supporting board | 1 |
| 0414 | Inner hexagonal bolt M8 $\times 25$ | 1 |
| 0415 | Spring bracket | 1 |
| 0416 | Torsion spring | 1 |
| 0417 | Anti-loosing nut M8 | 1 |
| 0418 | Nut M8 | 1 |
| 0419 | Inner hexagonal bolt M8 $\times 50$ | 1 |
| 0420 | axle of controllinig assembly | 1 |
| 0421 | Pedal | 3 |
| 0422 | Snap ring for shaft 14 | 2 |
| 0423 | Pedal sheath | 1 |
| 0424 | valve lever bracket | 2 |
| 0425 | Anti-loosing nut M8 | 2 |
| 0426 | Nut M6 | 2 |
| 0427 | Spring | 2 |
| 0428 | Washer 8 | 2 |
| 0429 | Nut M5 | 4 |
| 0430 | Spring washer 5 | 4 |



| | | |
|------|---------------------------------|----|
| 0501 | Self locking nut M12 | 2 |
| 0502 | Nut M6 | 12 |
| 0503 | L connector | 2 |
| 0504 | Cylinder body $\Phi 186$ | 1 |
| 0505 | flat washer | 1 |
| 0506 | Piston | 1 |
| 0507 | Piston bar | 1 |
| 0508 | Y ring $186 \times 12 \times 9$ | 1 |
| 0509 | O ring 186×5.7 | 1 |
| 0510 | Flat washer | 2 |
| 0511 | Big washer | 2 |
| 0512 | O ring $\Phi 180 \times 5.7$ | 2 |
| 0513 | Front cover of Big cylinder | 1 |
| 0514 | O ring 22×2.4 | 2 |
| 0515 | Snap ring for holes $\Phi 30$ | 1 |
| 0516 | Tower tilt pin | 1 |
| 0517 | Bead breaker holder | 1 |
| 0518 | Flat washer $\Phi 16$ | 1 |
| 0519 | Snap ring for shaft 16 | 1 |
| 0520 | Shocking pad | 1 |
| 0521 | Self locking nut M16 | 1 |
| 0522 | Cap nut M12 | 1 |
| 0523 | Sping washer $\Phi 12$ | 1 |
| 0524 | Flat washer $\Phi 12$ | 1 |
| 0525 | Hexagonal nut M8 | 2 |
| 0526 | bead break blade | 1 |
| 0527 | Inner hexagonal bolt | 12 |
| 0528 | handle sleeve | 1 |
| | | |
| | | |
| | | |



| | | |
|------|------------------------------------|---|
| 0601 | Motor belt wheel | 1 |
| 0602 | fix bolt | 1 |
| 0603 | Delta belt B-1270 | 1 |
| 0604 | Nut M16 | 1 |
| 0605 | Big sheave | 1 |
| 0606 | Outer coupling body | 1 |
| 0607 | Grease seal | 1 |
| 0608 | Bearing 30205 | 1 |
| 0609 | Flat key | 1 |
| 0610 | Worm screw | 1 |
| 0611 | Bearing 30205 | 1 |
| 0612 | Grease plug | 1 |
| 0613 | Up cover of gear box | 1 |
| 0614 | Bearing 6010 | 1 |
| 0615 | Inner sheath of distribution valve | 1 |
| 0616 | Quick insert connector | 4 |
| 0617 | O ring 60×2.5 | 3 |
| 0618 | Outer sheath of distribution valve | 1 |
| 0619 | Main shaft | 1 |
| 0620 | Fixing bolt | 4 |
| 0621 | Gear | 1 |
| 0622 | Flat key | 1 |
| 0623 | Snap ring for shaft | 1 |
| 0624 | Bearing 6208 | 1 |
| 0625 | Down cover of gear box | 1 |
| 0626 | Hexagonal bolt | 4 |
| 0627 | Supporting board for Motor | 1 |
| 0628 | Motor shock absorption washer | 4 |
| 0629 | flat washer | 8 |
| 0630 | Nut M8 | 4 |
| 0631 | Motor | 1 |